

Kosei

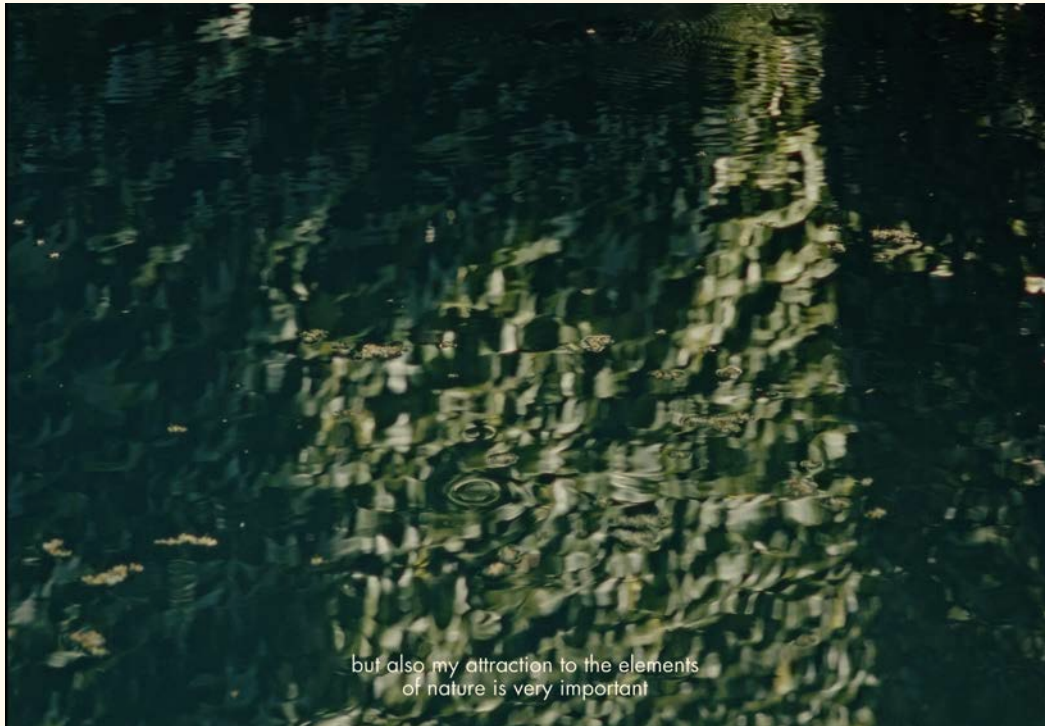
Vincent Van Duysen

Mutina

“Con Kosei volevo approfondire la storia dei pattern legati al mondo dell’architettura. Abbiamo ottenuto una collezione molto versatile, che ti permette di passare da un layout omogeneo a uno molto ritmato e grafico”.

“With Kosei, I wanted to deepen into the history of patterns linked to the world of architecture. We created an extremely versatile collection, with which it’s possible to develop both homogeneous and graphical, rhythmic layouts.”

Vincent Van Duysen



but also my attraction to the elements
of nature is very important



This makes them quite sculptural with a strong presence.





Kosei

Vincent Van Duysen

Con Kosei – che in giapponese significa composizione – Vincent Van Duysen propone un range di superfici ceramiche realizzate con l'utilizzo di materiali puri e tattili, ispirate alle rocce laviche, come le ossidiane e i vetri vulcanici, omogenei amorfi e dalla notevole durezza. Il risultato finale è un design senza tempo, pensato per la grande architettura, ed estremamente versatile, grazie a 8 formati e 5 colori che possono essere accostati per creare infinite combinazioni dal gusto gradatamente decorativo.

Kosei è pensata specificamente per essere utilizzata a pavimento, sia in interno che in esterno. La collezione comprende una vasta gamma di elementi: i formati 60x180 cm, 60x90 cm, 60x60 cm, 15x90 cm, 15x60 cm, 15x30 cm e 15x15 cm sono perfettamente modulari fra di loro e presentano una texture morbida; in più è stato creato il formato Chevron nelle misure 9,6x56,5 cm ed è pensato per conferire maggiore profondità alle

superfici. I numerosi formati permettono di realizzare superfici eleganti con finitura opaca, ma anche di giocare con la creatività: scegliendo uno o più formati e alternando i colori proposti dalla palette – Bone, Storm, Terra, Grey Green e Dark Grey – si possono creare pattern armoniosi e dinamici, molto diversi tra loro.

La collezione viene prodotta mediante il metodo di estrusione, uno straordinario processo di lavorazione che permette di ottenere un prodotto con caratteristiche tecnologiche superiori, con un aspetto autentico e naturale, ma anche resistente e durevole, nonché di altissima qualità. Il procedimento avviene in un impianto industriale unico al mondo, che permette di ottenere grandi formati con l'estrusione di impasti colorati a tutta massa e totalmente privi di smalto. I prodotti realizzati con questo processo hanno una maggiore compattazione, che ne migliora la resistenza alla flessione, alle macchie e all'acqua.

With Kosei – which means *composition* in Japanese – Vincent Van Duysen proposes a range of ceramic surfaces developed with pure and tactile materials, inspired by lava rocks such as obsidian and volcanic glasses, which are homogeneous, amorphous and with exceptional hardness. The end result is a timeless design conceived for “grand” architecture, characterised by extreme versatility thanks to the 8 formats and 5 colours that can be matched to create infinite combinations with a progressively decorative taste.

Kosei has been specifically conceived for floors, both indoors and outdoors. The collection features a wide range of elements: the 60x180 cm, 60x90 cm, 60x60 cm, 15x90 cm, 15x60 cm, 15x30 cm and 15x15 cm formats are perfectly modular with each other and have a soft texture; in addition, the Chevron format, available in size 9.6x56.5 cm, has been created to lend depth to surfaces. The numerous elements make it possible to

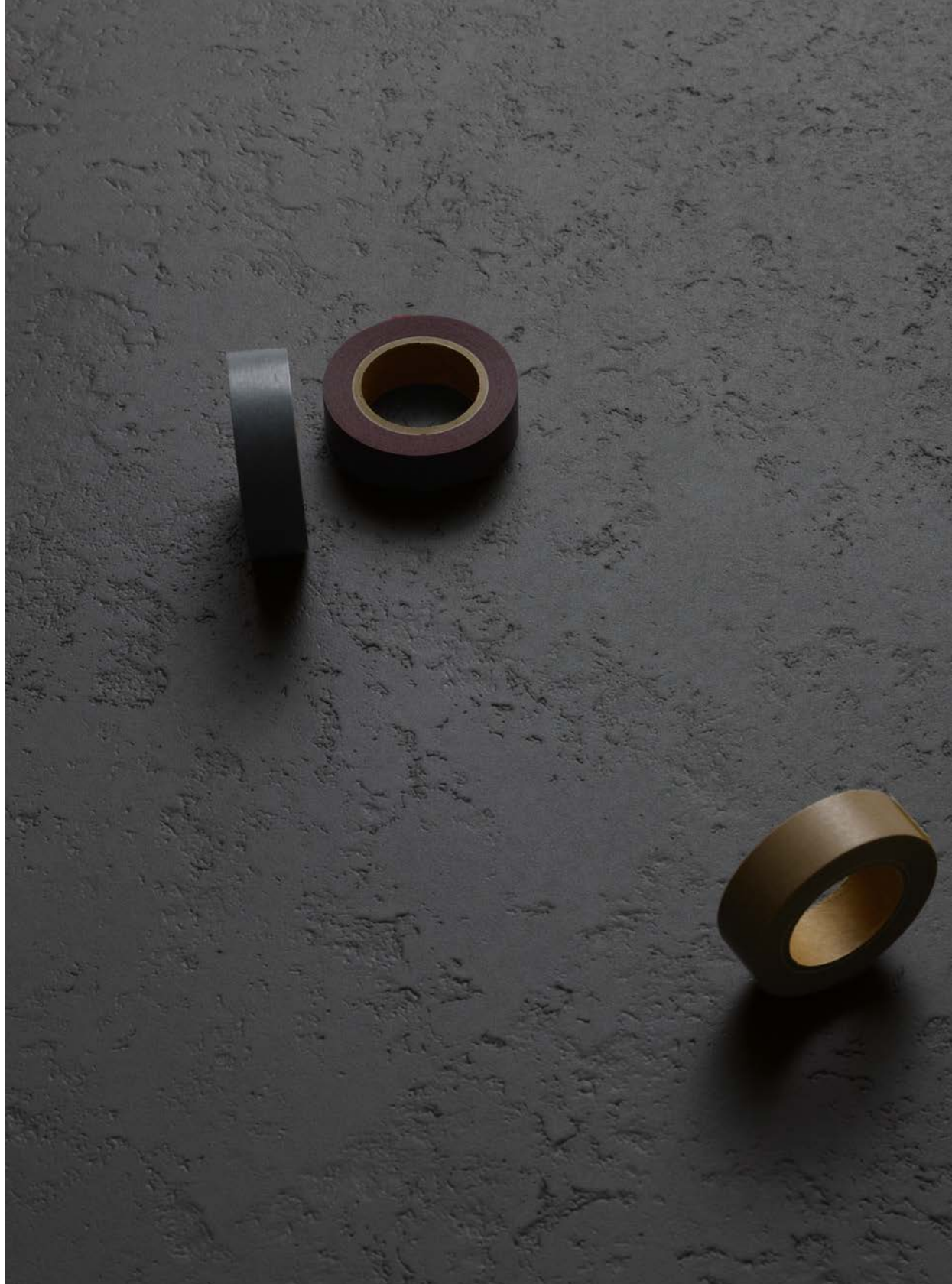
design elegant matt surfaces, but also allow for creativity: by choosing one or more formats and alternating the 5 available colours – Bone, Storm, Terra, Grey Green and Dark Grey – it is possible to create different harmonious yet dynamic compositions.

The collection is produced with the extrusion method, an extraordinary production process that makes it possible to obtain a high-quality product with superior technological features and an authentic and natural feel, but which is also resistant and durable. The procedure takes place in an industrial facility unique in the world, in which it is possible to produce large slabs by extruding full-body coloured bodies totally free of glaze. The products developed with this process have greater compaction, which improves their resistance to bending, stains and water.

Pure Matter

Grazie al particolare processo produttivo e all'utilizzo di materiali puri, Kosei riproduce l'effetto di un materiale autentico, naturalmente tattile.

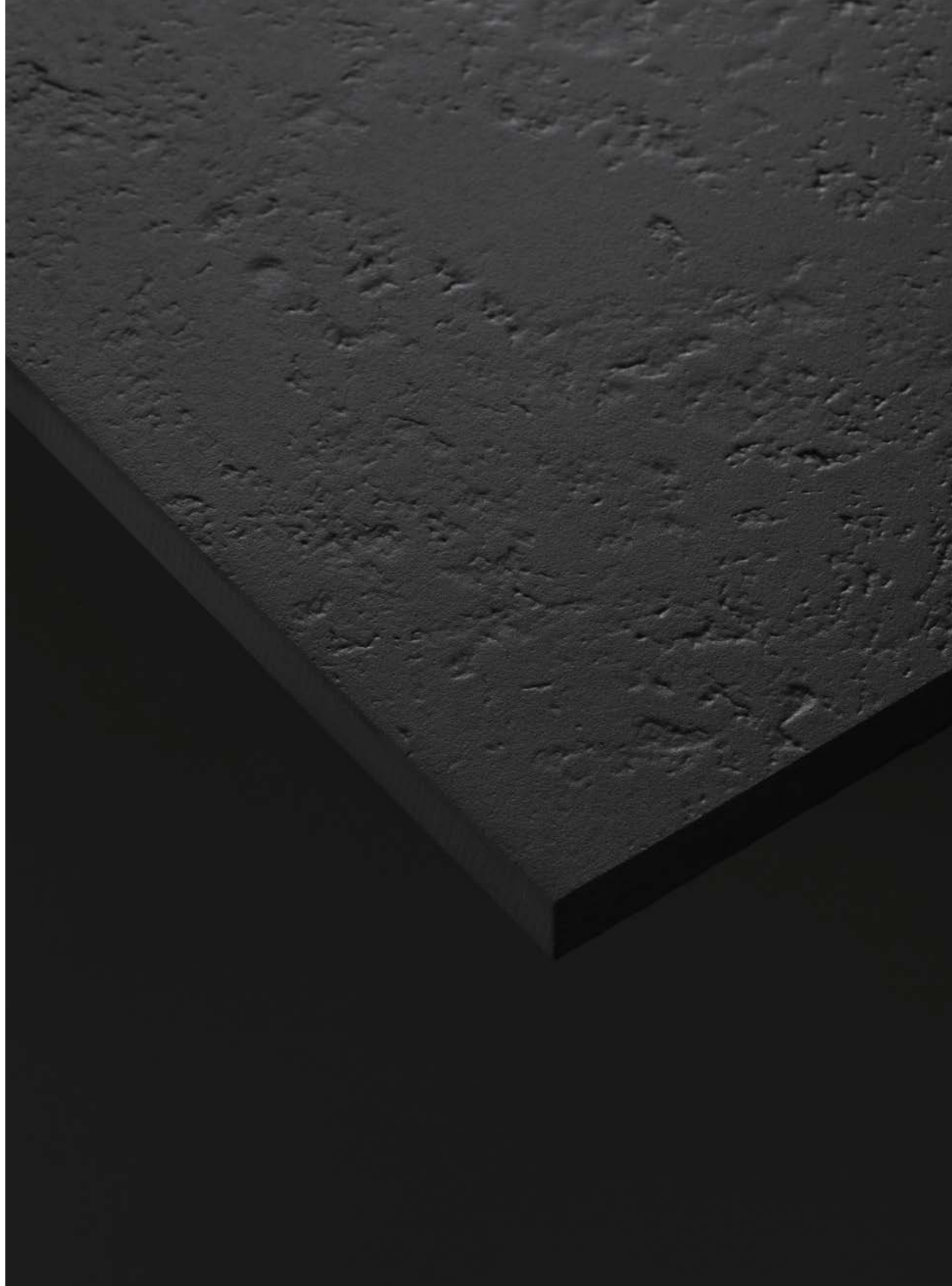
Thanks to the particular production process and the use of pure matters, Kosei reproduces the effect of an authentic material, naturally tactile.



A unique production process

Kosei viene prodotta per estrusione con l'obiettivo di ottenere delle superfici ceramiche di alta qualità e dalle caratteristiche tecnologiche superiori: maggiore resistenza alla flessione, alle macchie e all'acqua.

Kosei is produced by extrusion with the aim of obtaining high-quality ceramic surfaces with superior technological features: a higher flexural strength and greater resistance to water and stains.

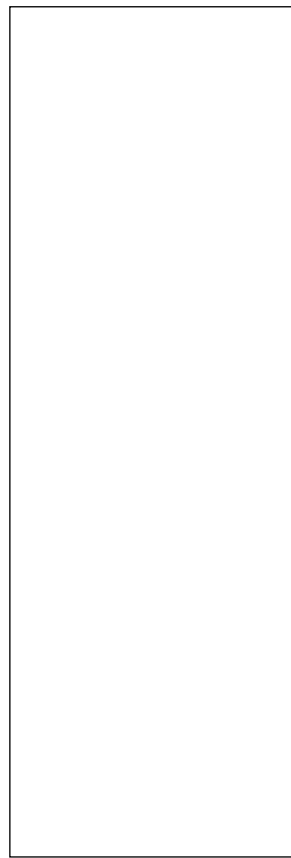


8 Sizes

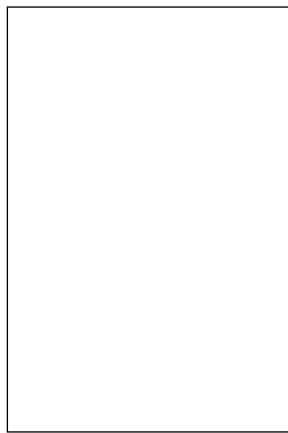
7 Modular sizes
+ Chevron

Il range di collezione presenta 7 elementi perfettamente modulari tra loro nelle misure 60x180 cm, 60x90 cm, 60x60 cm, 15x90 cm, 15x60 cm, 15x30 cm e 15x15 cm, a cui si aggiunge Chevron nelle misure 9,6x56,5 cm.

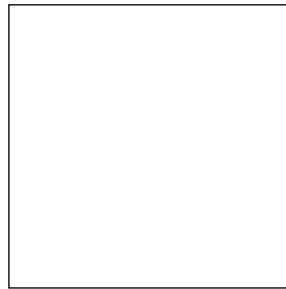
The collection range presents 7 modular elements in 60x180 cm, 60x90 cm, 60x60 cm, 15x90 cm, 15x60 cm, 15x30 cm and 15x15 cm formats, with the addition of Chevron in a 9,6x56,5 cm format.



60x180 cm



60x90 cm



60x60 cm



15x90 cm



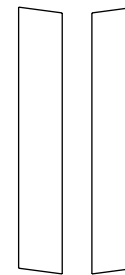
15x60 cm



15x30 cm



15x15 cm



Chevron 9,6x56,5 cm



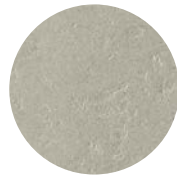
5 Colours

Gli elementi di Kosei sono disponibili in 5 colorazioni dal look and feel morbido e avvolgente: Bone, Storm, Terra, Grey Green e Dark Grey, sviluppate appositamente per essere combinate tra loro e creare accostamenti armoniosi.

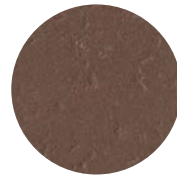
The elements of Kosei are available in 5 colours with a soft and immersive look and feel: Bone, Storm, Terra, Grey Green and Dark Grey, especially developed to be paired with each other and create harmonious combinations.



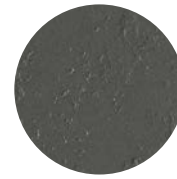
Bone



Storm



Terra



Grey Green



Dark Grey



“Abbiamo sviluppato dei pattern che prendono forma in diversi modi, semplicemente cambiando il colore di alcuni pezzi. Questo ci permette di avere diverse letture della collezione”.

“We developed several patterns that reveal themselves in different ways by just changing the colour of certain pieces. This gives us a different reading of the collection.”

Vincent Van Duysen







Kosei Chevron Grey Green (previous pages)
Kosei Dark Grey, Bone (opposite page)





Layout suggestions by Vincent Van Duysen

Kosei propone una collezione di superfici dal design senza tempo, pensate per la grande architettura, ed estremamente versatili, grazie a 8 formati e 5 colori che possono essere accostati per creare infinite combinazioni dal gusto gradatamente decorativo. I diversi moduli permettono di

realizzare superfici eleganti con finitura opaca, ma anche di giocare con la creatività: scegliendo uno o più formati e alternando i colori proposti dalla palette si possono creare pattern armoniosi e dinamici, molto diversi tra loro.

Kosei provides a timeless design conceived for "grand" architecture, characterised by extreme versatility thanks to the 8 formats and 5 colours that can be matched to create infinite combinations with a progressively decorative taste. The different modules make it possible

to design elegant matt surfaces, but also allow for creativity: by choosing one or more formats and alternating the 5 available colours it is possible to create different harmonious yet dynamic compositions.

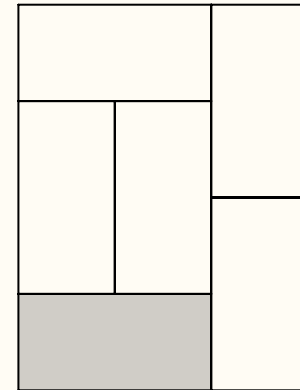
One Size

ONE SIZE



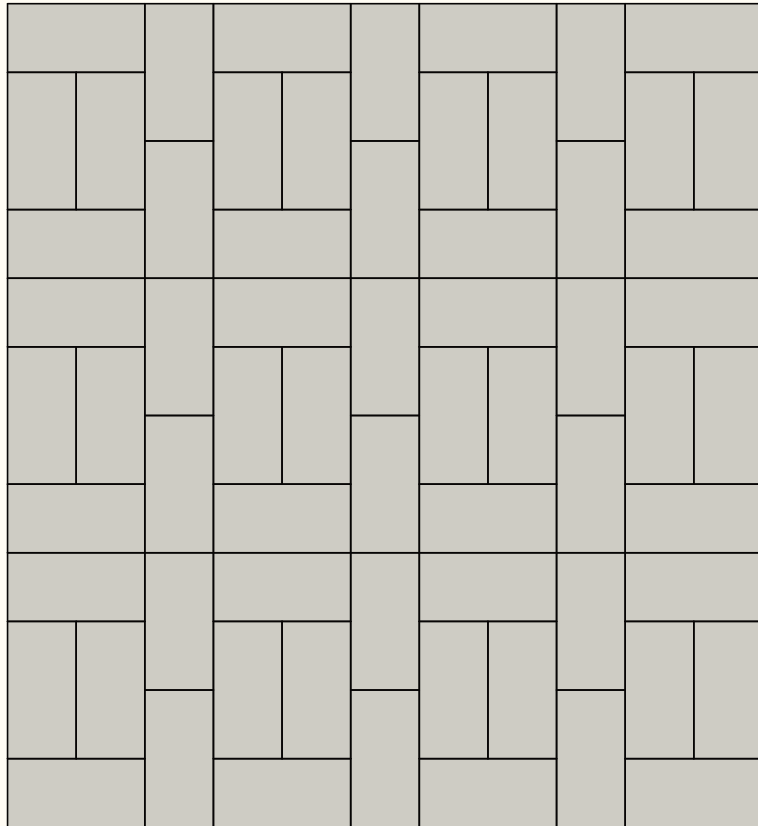
15 x 30 cm

LAYOUT



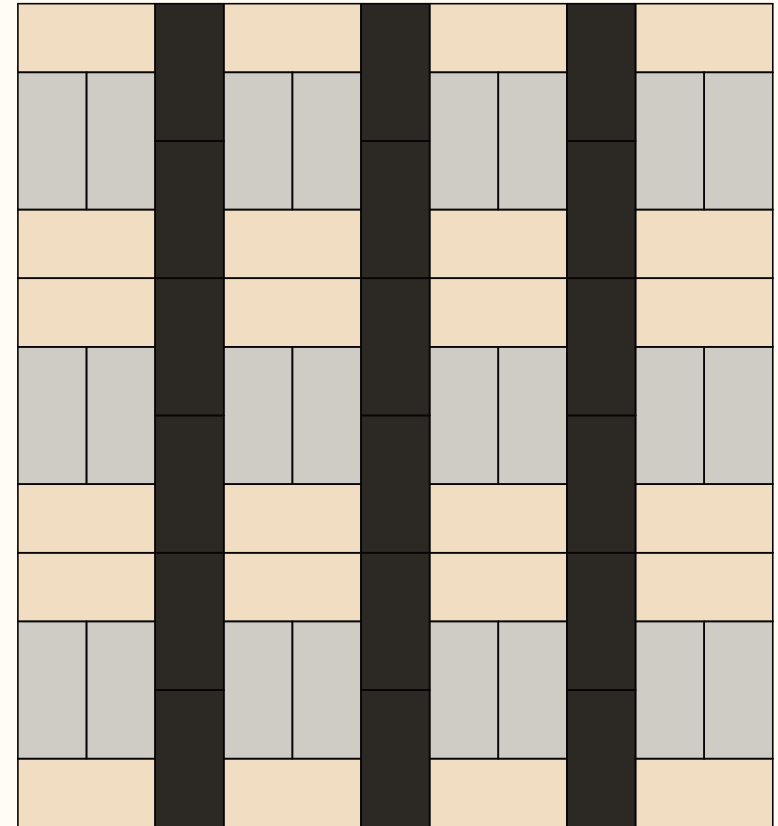
Size
100% 15x30 cm

1A



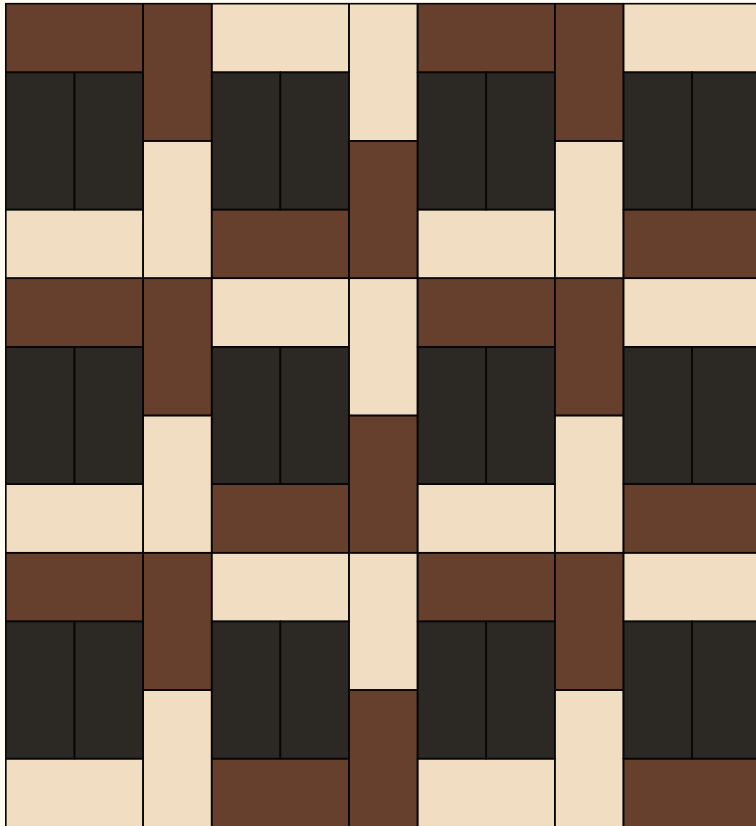
Color
100 % Storm 15x30 cm

1B



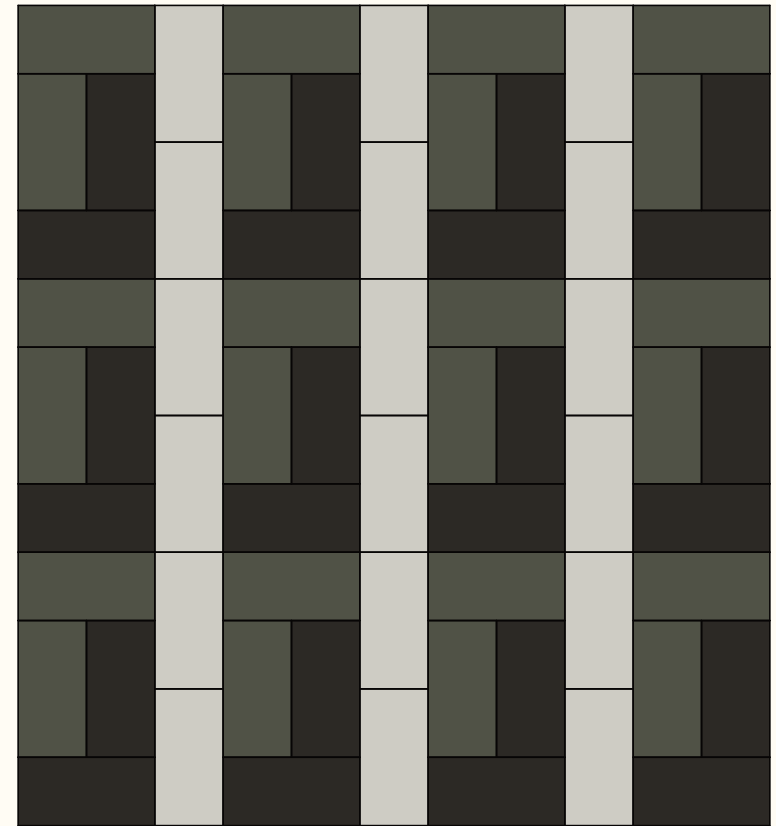
Colors
33,3% Storm 15x30 cm
33,3% Bone 15x30 cm
33,3% Dark Grey 15x30 cm

1C



Colors
33,3% Bone 15x30 cm
33,3% Terra 15x30 cm
33,3% Dark grey 15x30 cm

1D



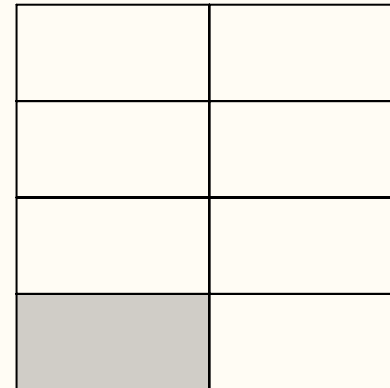
Colors
33,3% Storm 15x30 cm
33,3% Grey Green 15x30 cm
33,3% Dark Grey 15x30 cm

ONE SIZE



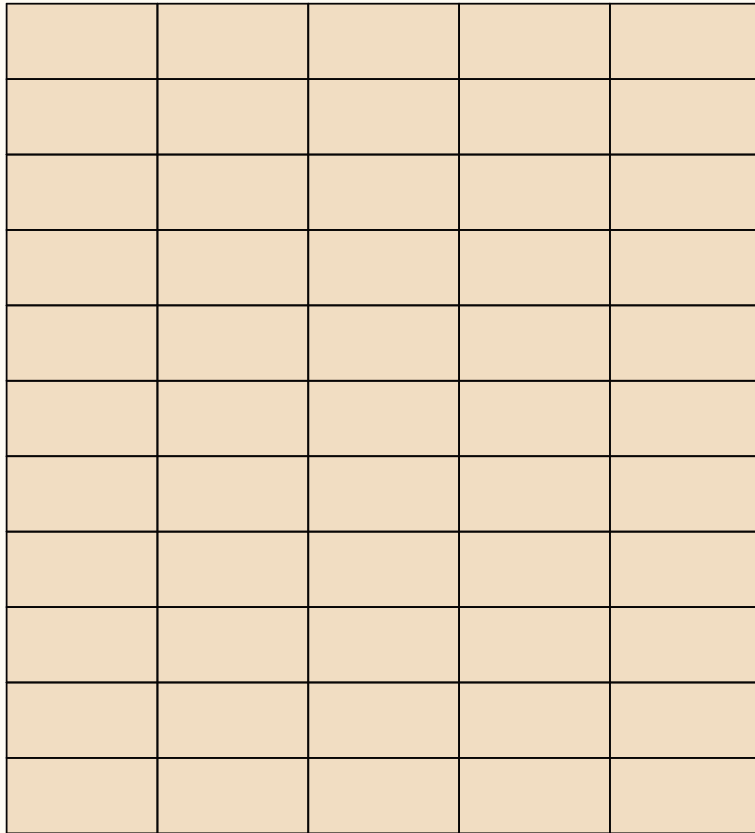
15 x 30 cm

LAYOUT



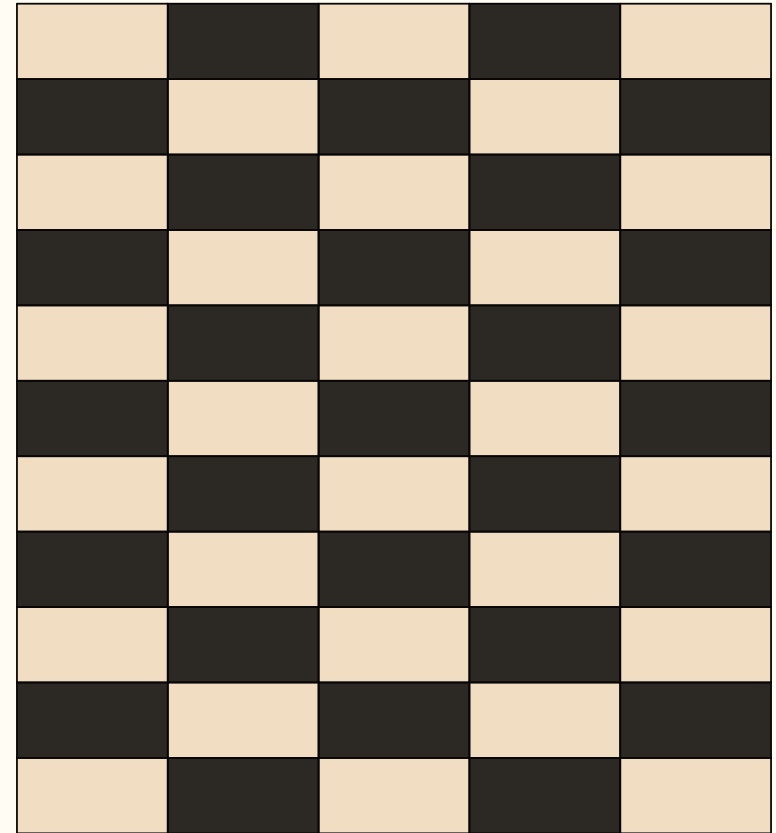
Size
100% 15x30 cm

1E



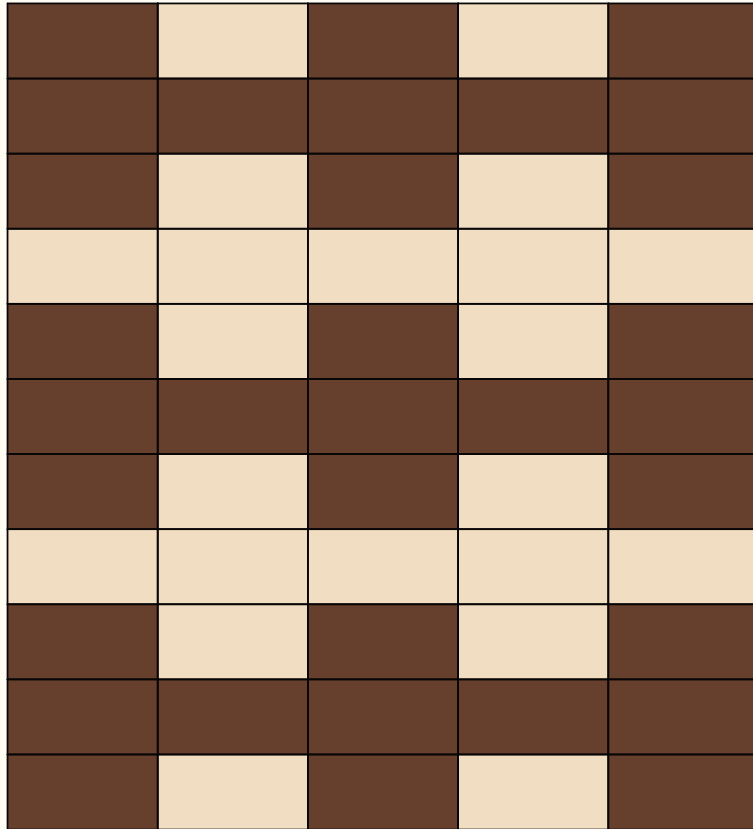
Color
100% Bone 15x30 cm

1F



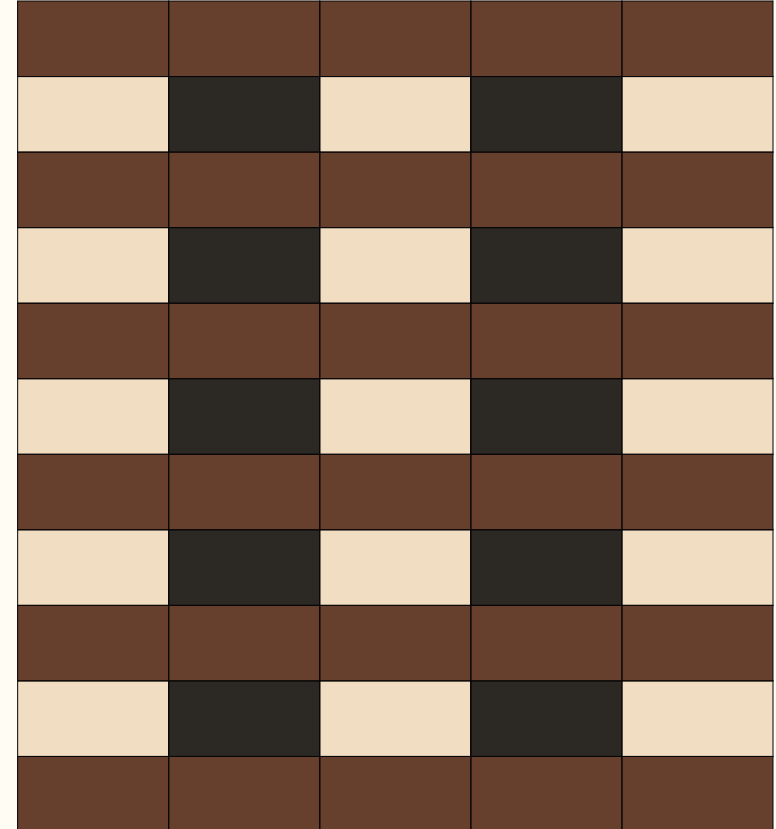
Colors
50% Bone 15x30 cm
50% Dark Grey 15x30 cm

1G



Colors
50% Terra 15x30 cm
50% Bone 15x30 cm

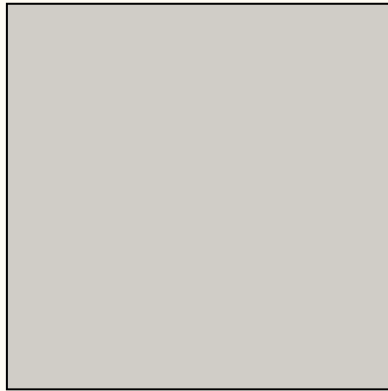
1H



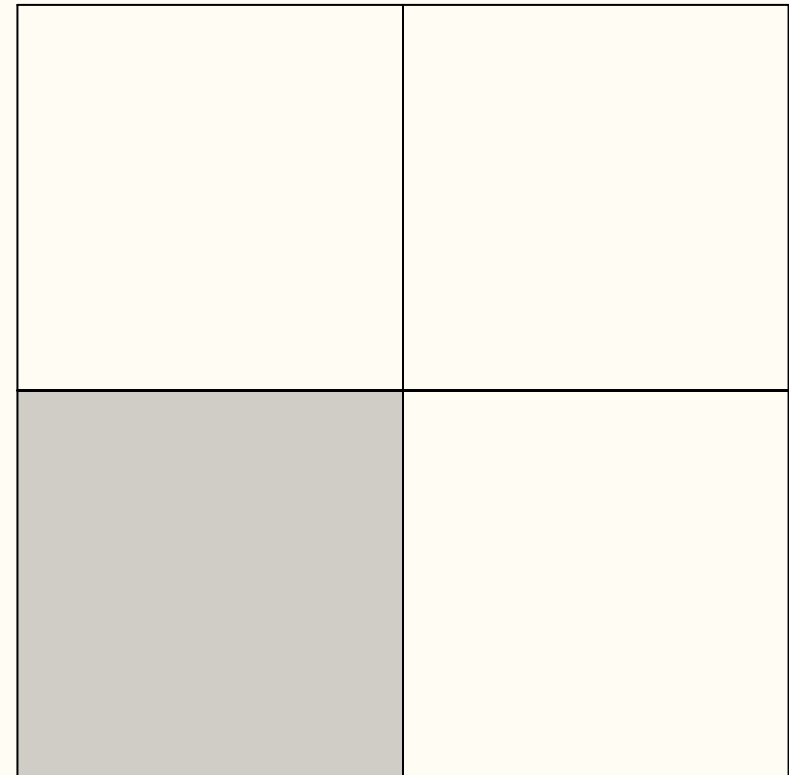
Colors
25% Bone 15x30 cm
25% Dark Grey 15x30 cm
50% Terra 15x30 cm

ONE SIZE

LAYOUT



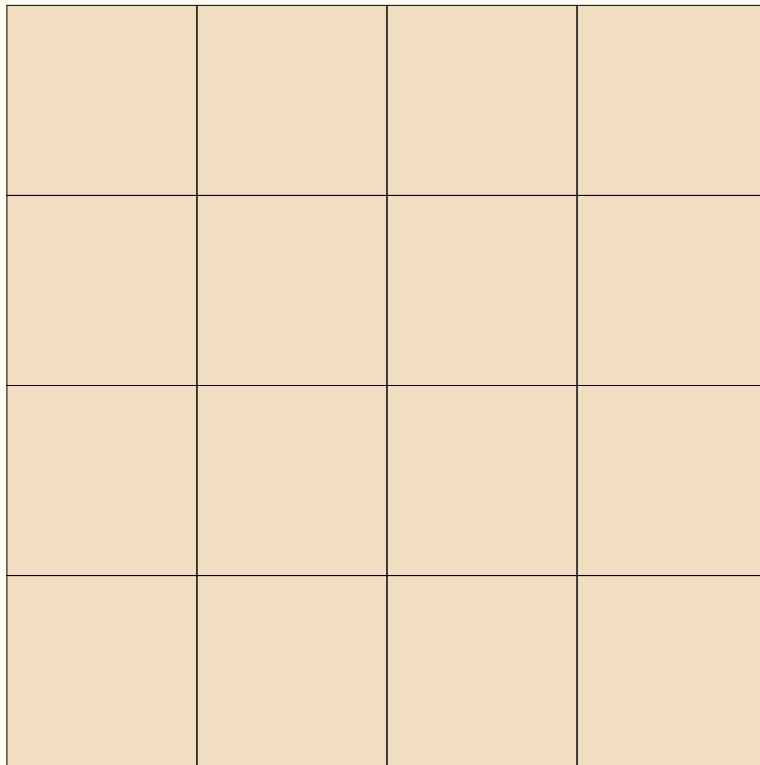
60 x 60 cm



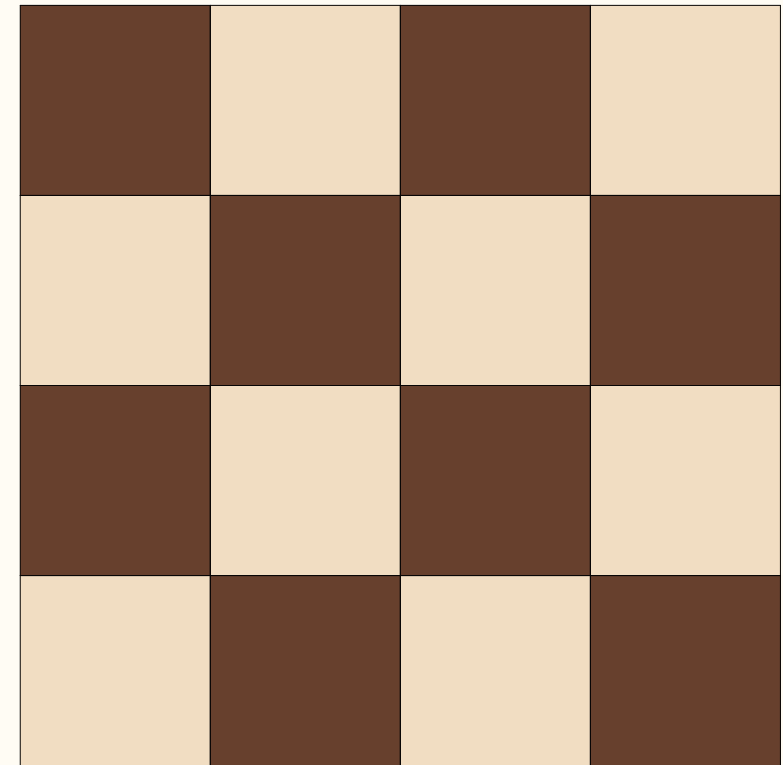
Size
100% 60x60 cm

1J

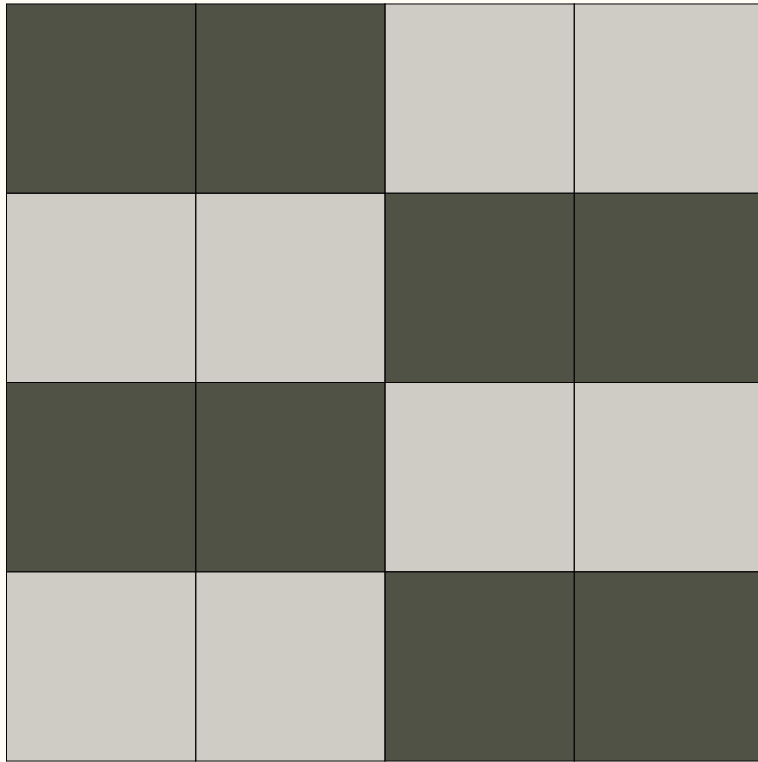
1K



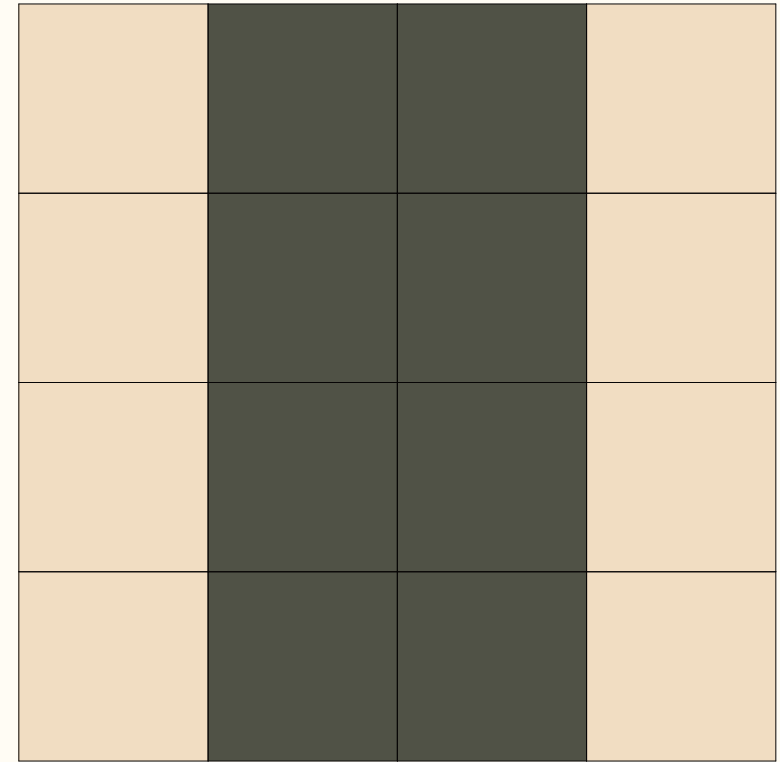
Color
100% Bone 60x60 cm



Colors
50% Bone 60x60 cm
50% Terra 60x60 cm

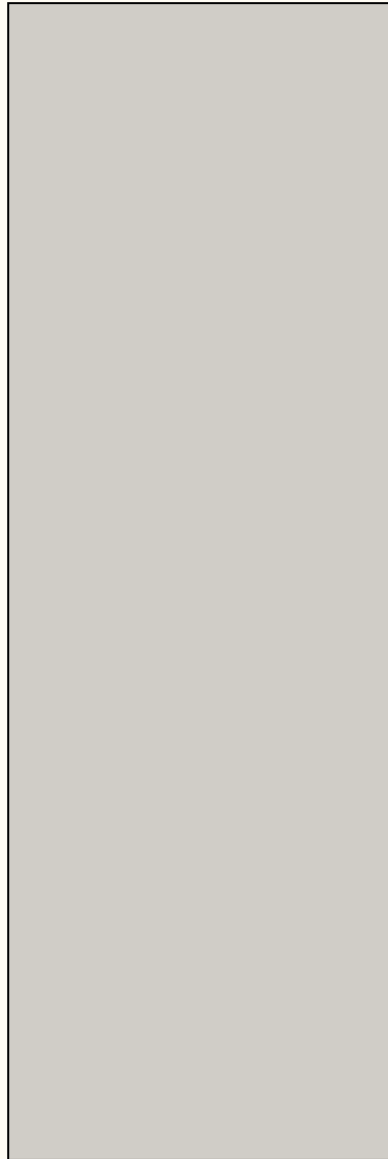


Colors
 50% Grey Green 60x60 cm
 50% Storm 60x60 cm



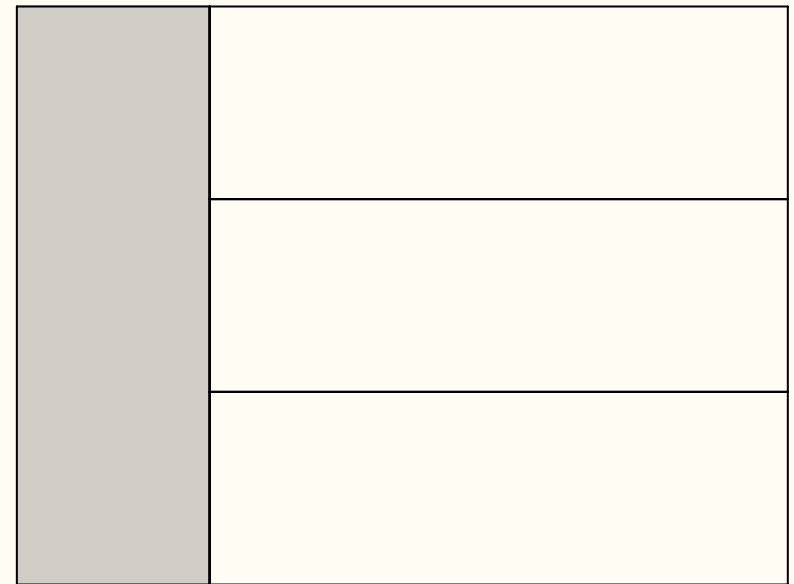
Colors
 50% Bone 60x60 cm
 50% Grey Green 60x60 cm

ONE SIZE



180 x 60 cm

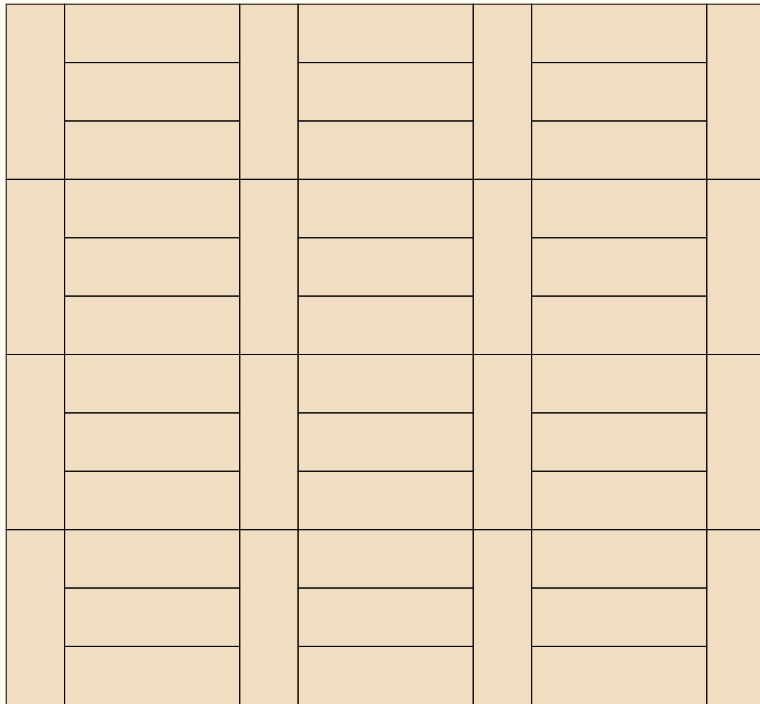
LAYOUT



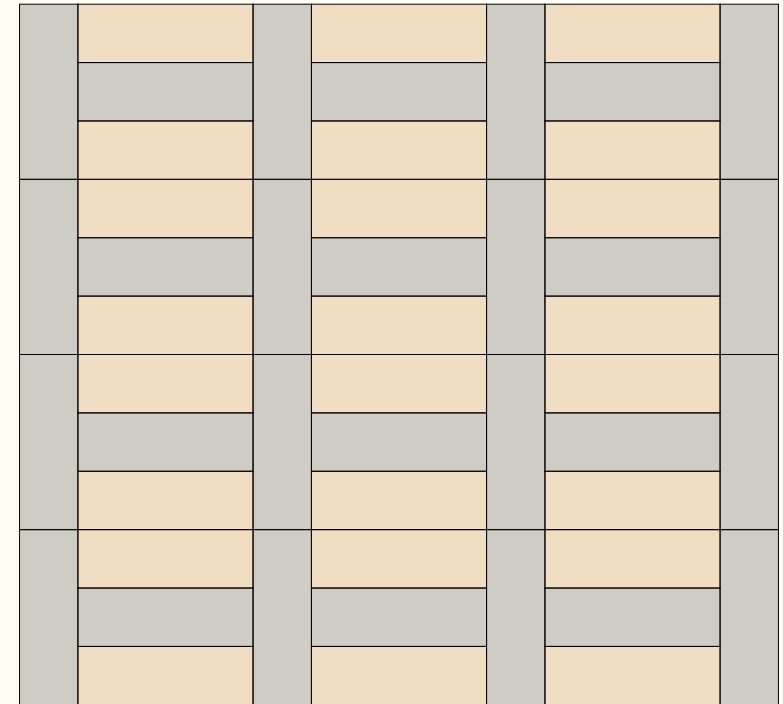
Size
100% 180x60 cm

1N

1P



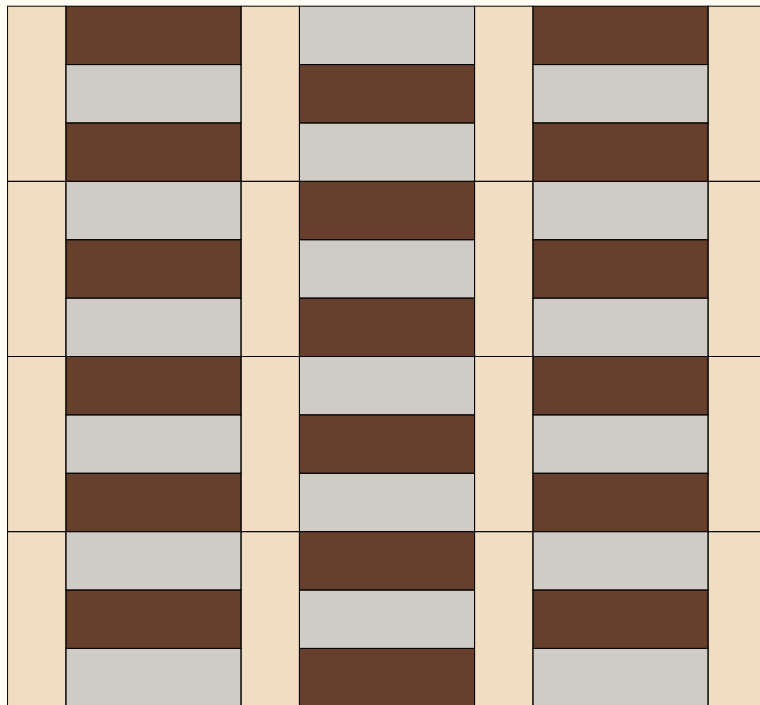
Color
100% Bone 180x60 cm



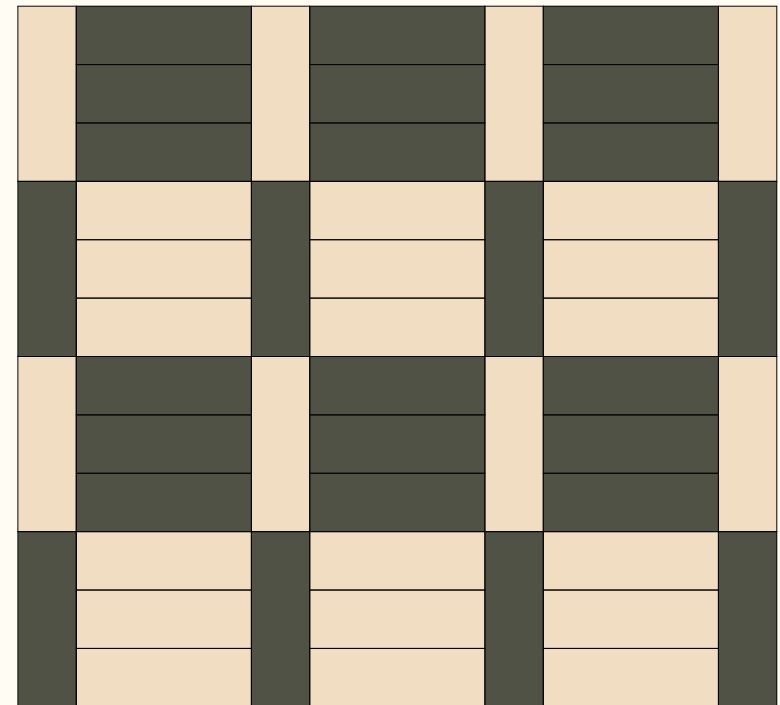
Colors
50% Bone 180x60 cm
50% Storm 180x60 cm

1Q

1R



Colors
37,5% Terra 180x60 cm
37,5% Storm 180x60 cm
25% Bone 180x60 cm



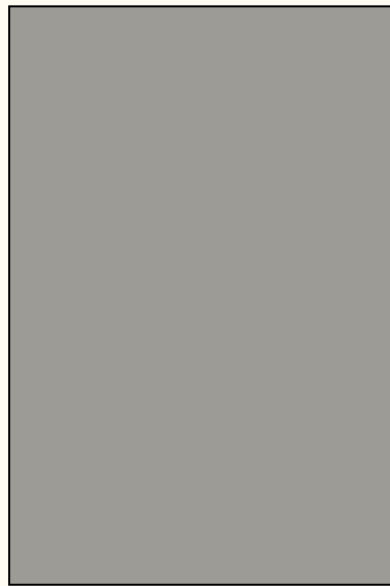
Colors
50% Bone 180x60 cm
50% Grey Green 180x60 cm

Two Sizes

TWO SIZES

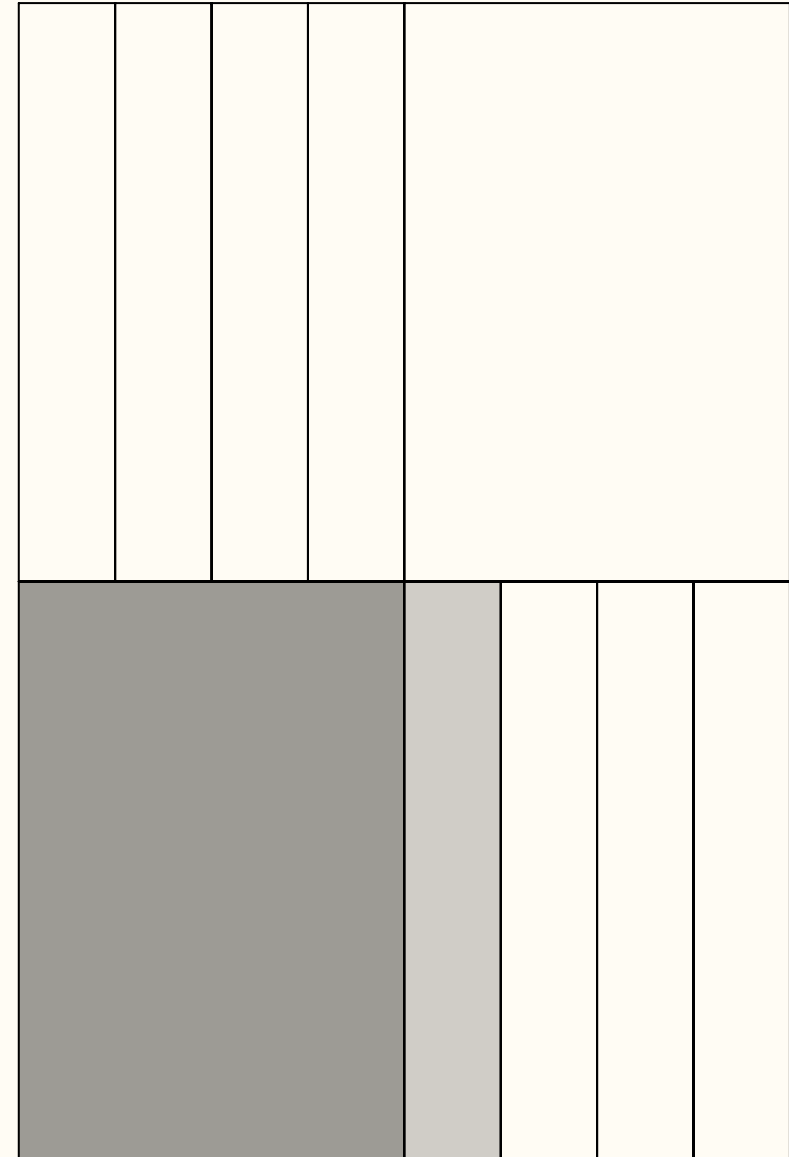


90 x 15 cm



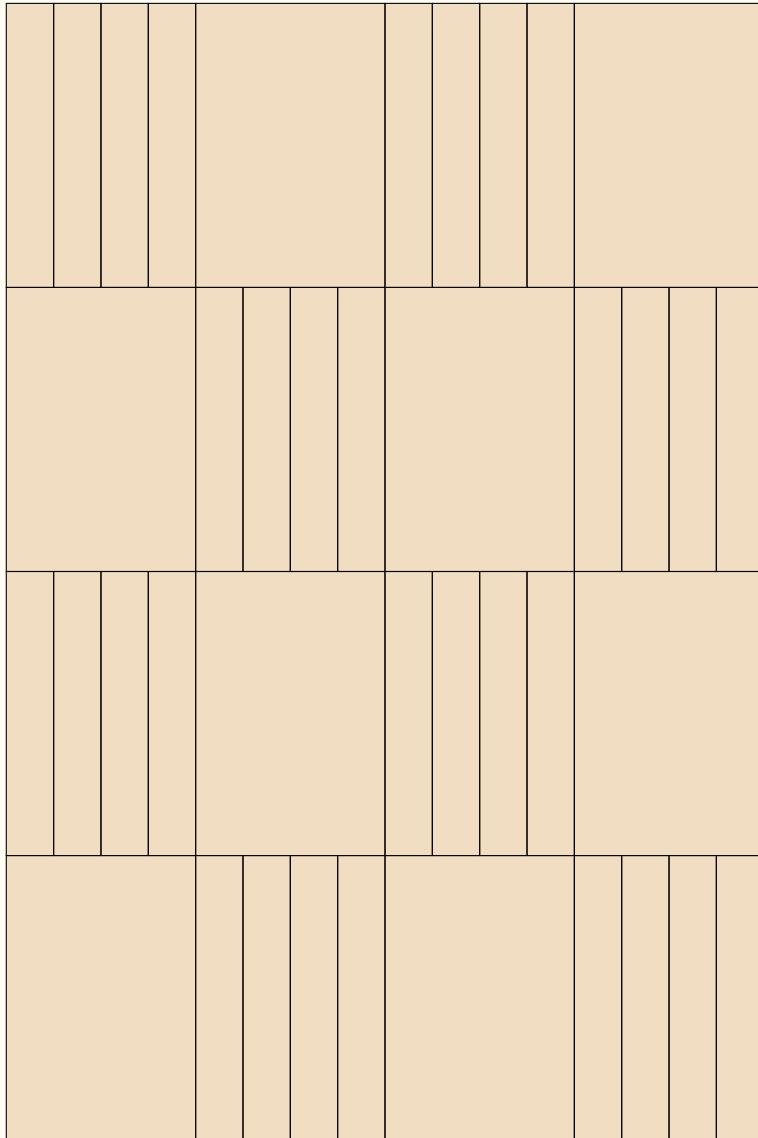
90 x 60 cm

LAYOUT



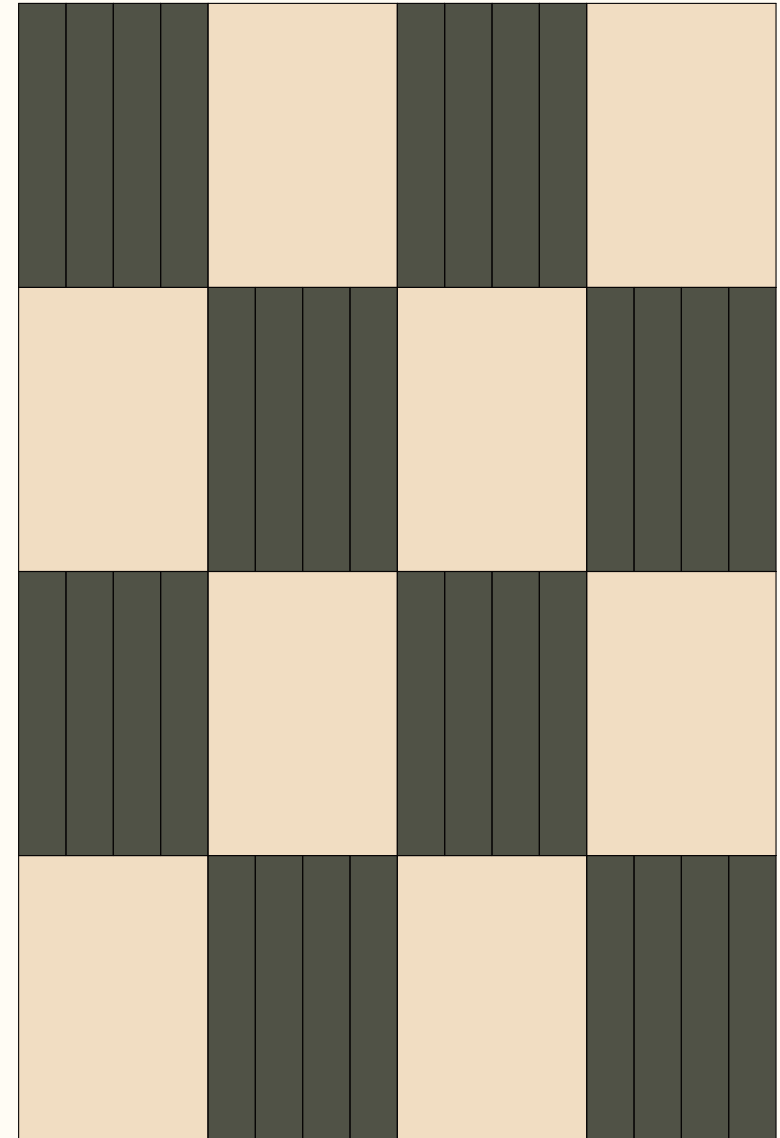
Sizes
50% 90x15 cm
50% 90x60 cm

2A



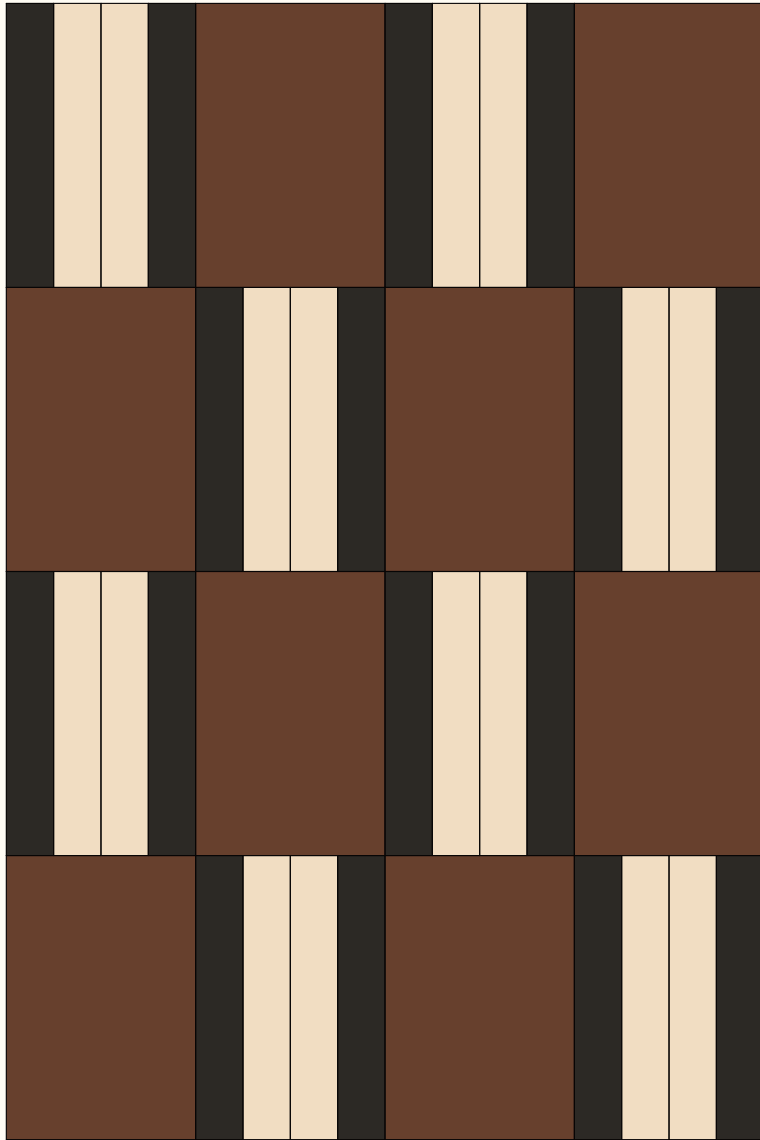
Colors
50% Bone 90x15 cm
50% Bone 90x60 cm

2B



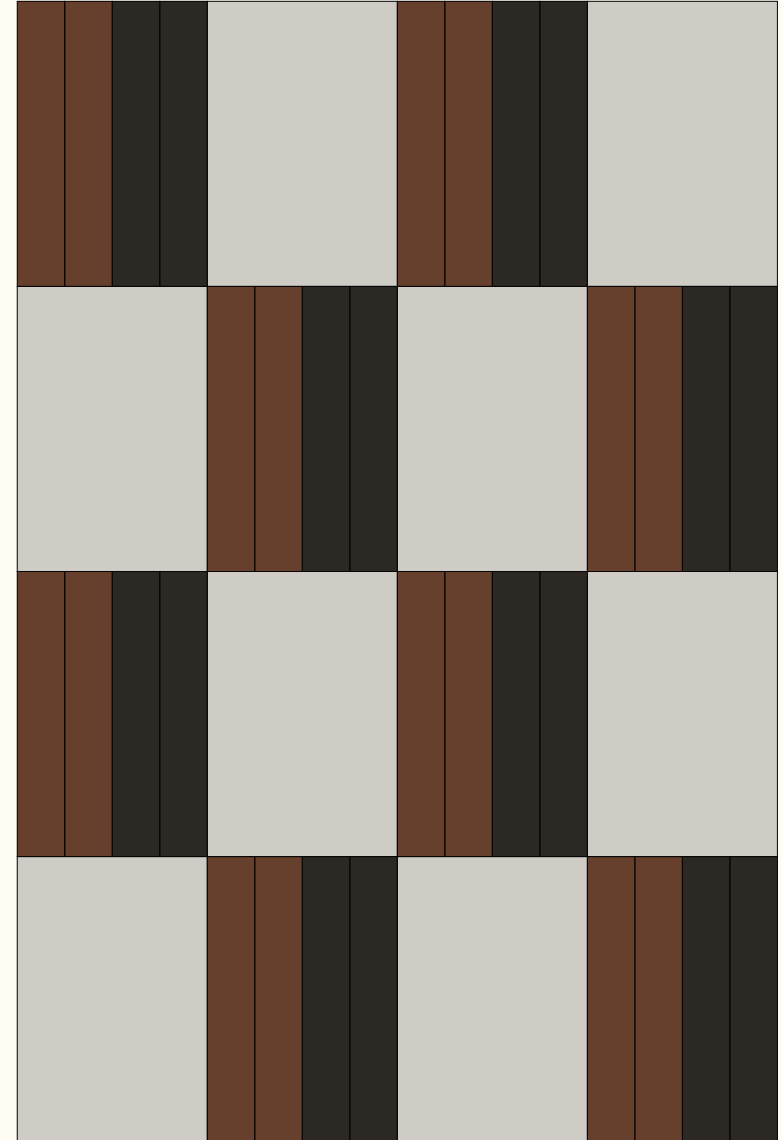
Colors
50% Grey Green 90x15 cm
50% Bone 90x60 cm

2C



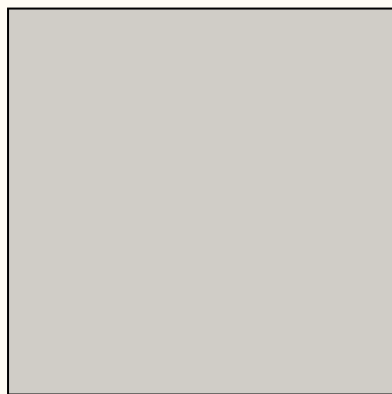
Colors
25% Dark Grey 90x15 cm
25% Bone 90x15 cm
50% Terra 90x60 cm

2D



Colors
25% Terra 90x15 cm
25% Dark Grey 90x15cm
50% Storm 90x60 cm

TWO SIZES

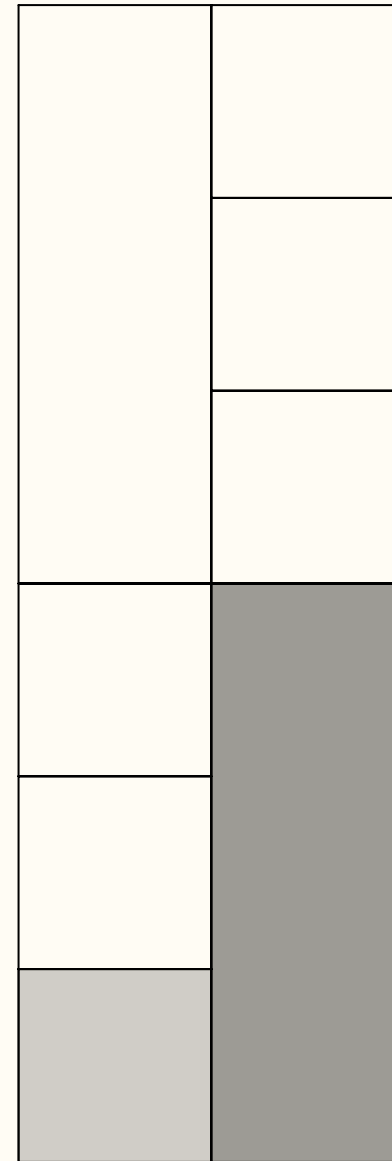


60 x 60 cm



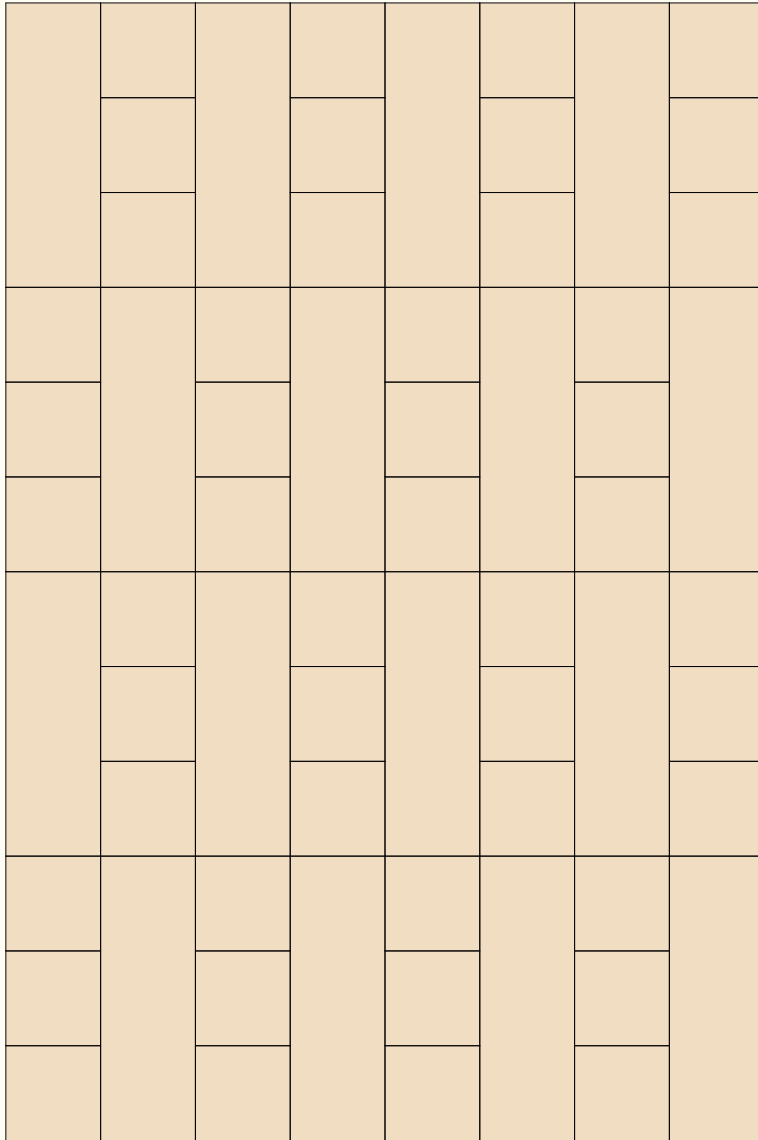
180 x 60 cm

LAYOUT



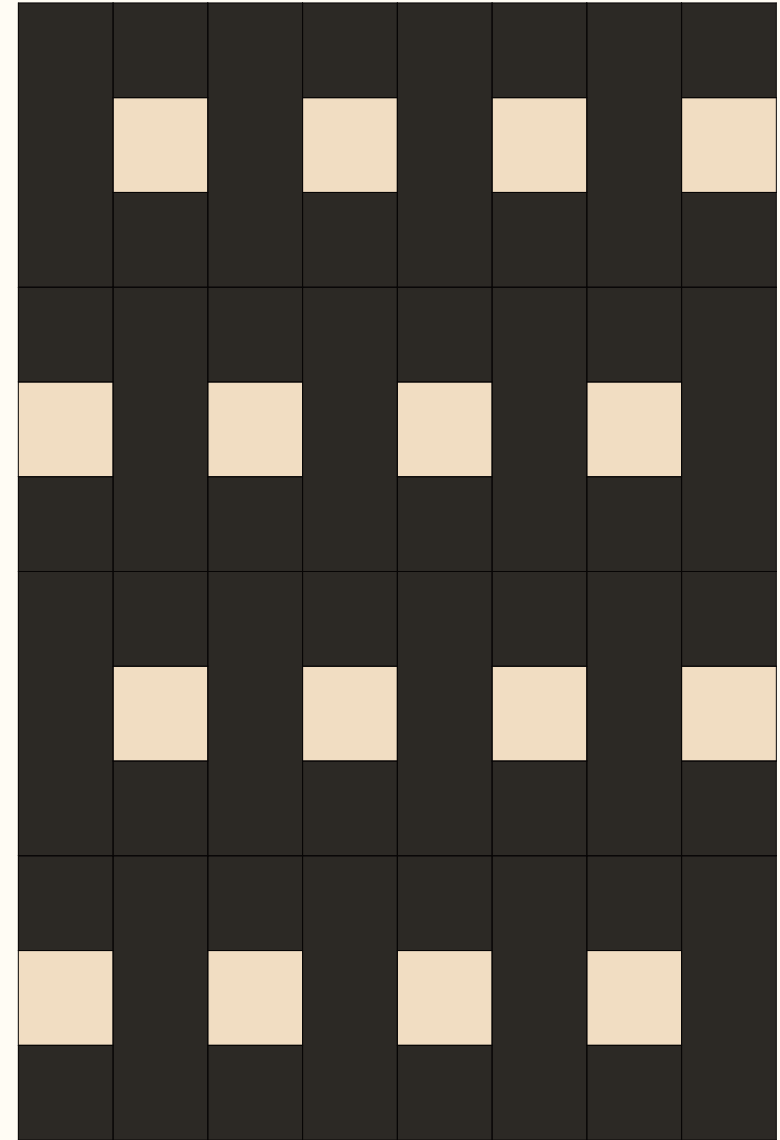
Sizes
50% 60x60 cm
50% 180x60 cm

2E

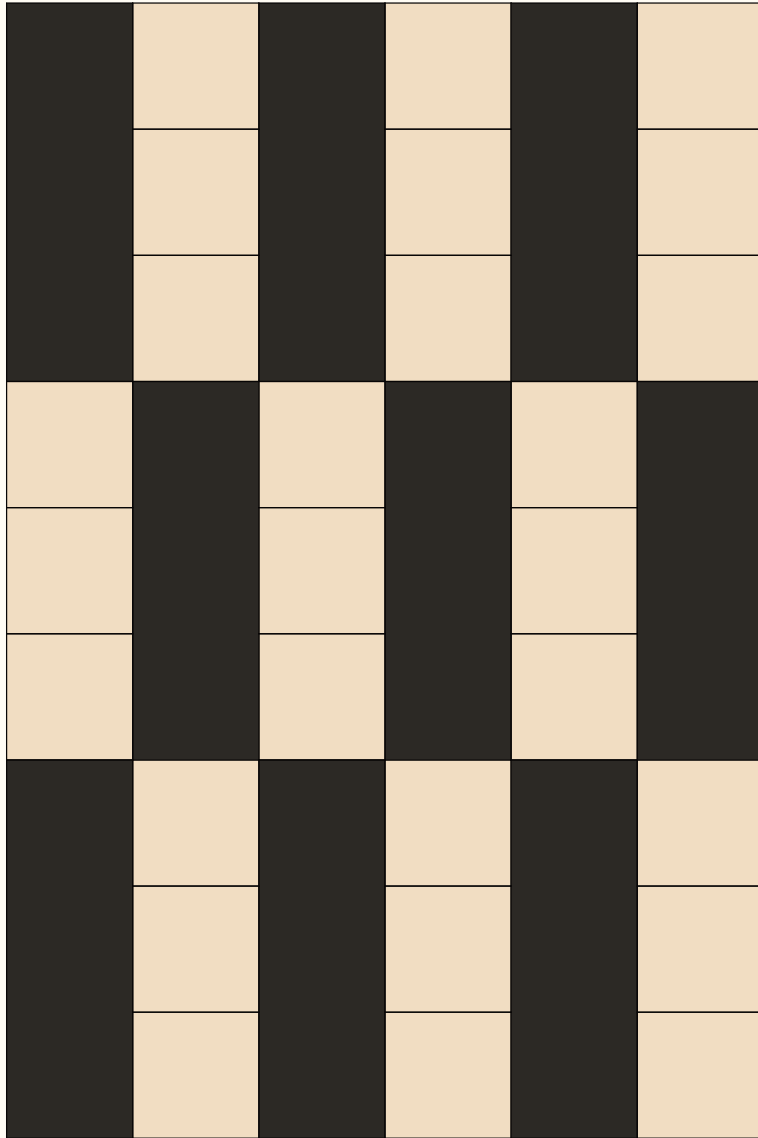


Colors
50% Bone 60x60 cm
50% Bone 180x60 cm

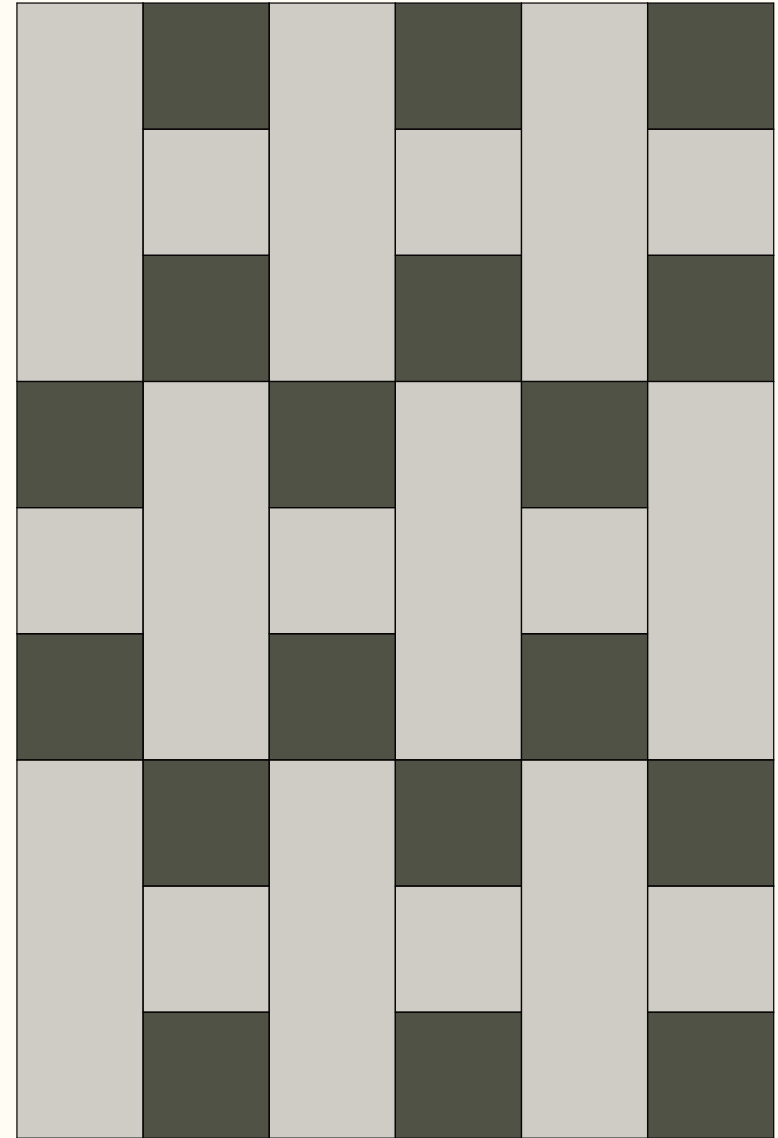
2F



Colors
33,3% Dark Grey 60x60 cm
16,7% Bone 60x60 cm
50% Dark Grey 180x60 cm



Colors
 50% Bone 60x60 cm
 50% Dark Grey 180x60 cm

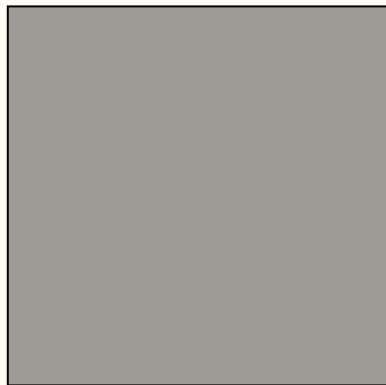


Colors
 16,7% Storm 60x60 cm
 33,3% Grey Green 60x60 cm
 50% Storm 180x60 cm

TWO SIZES

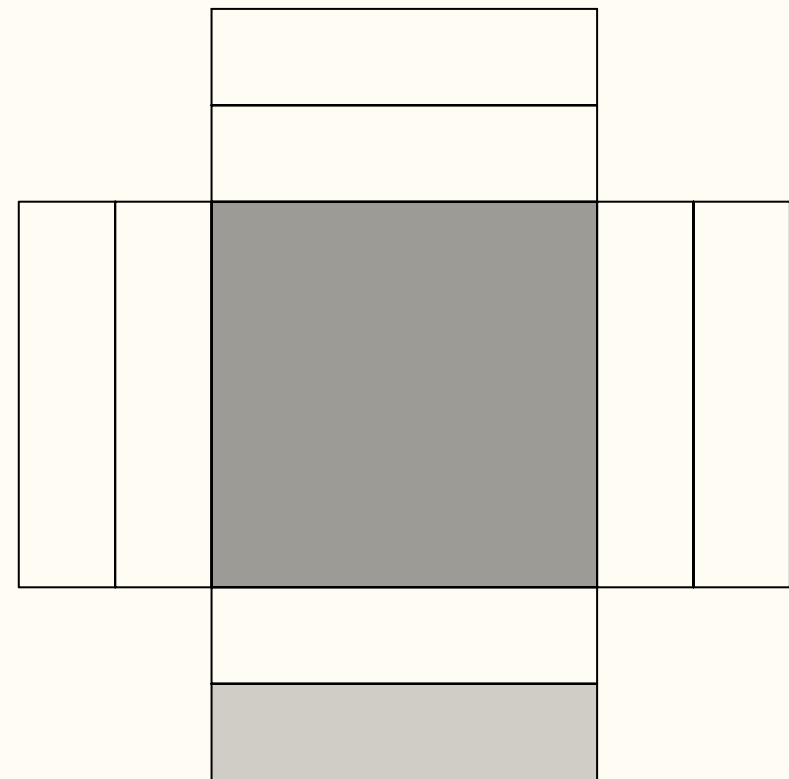


15 x 60 cm

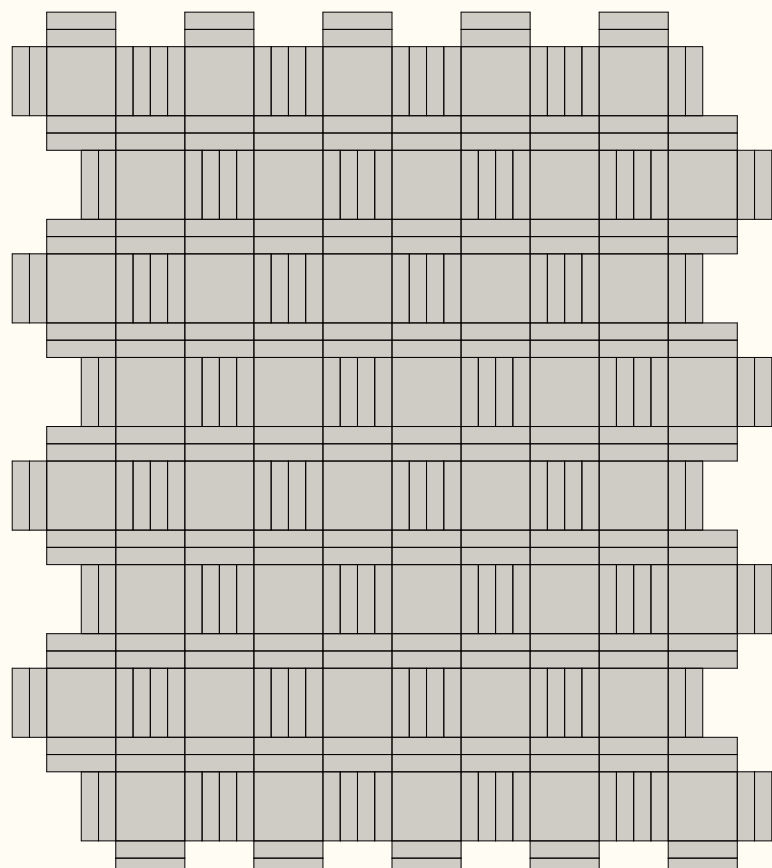


60 x 60 cm

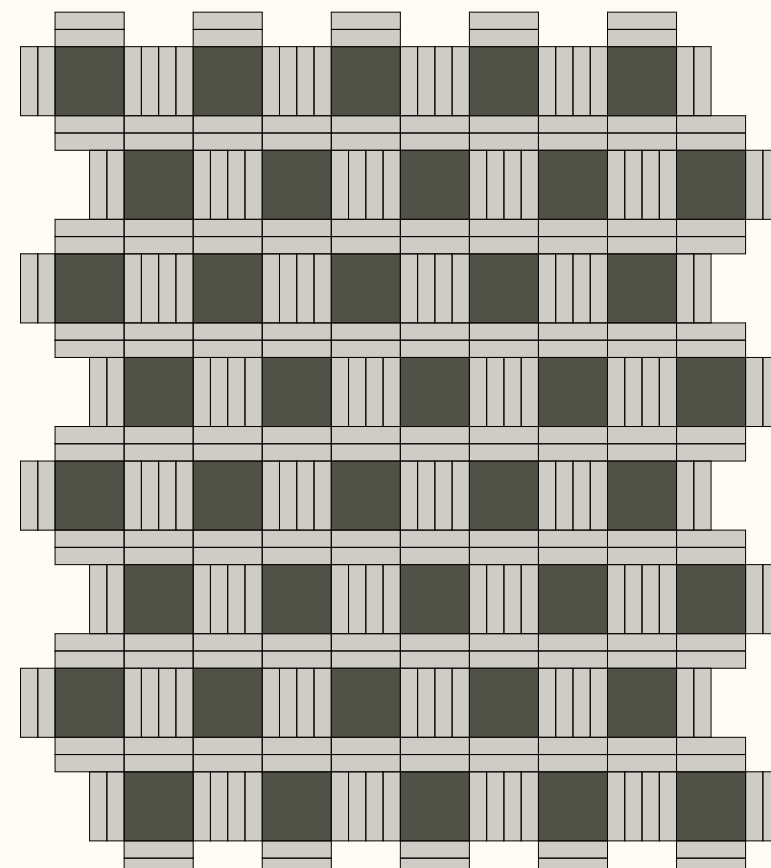
LAYOUT



Sizes
66,67% 15x60 cm
33,33% 60x60 cm

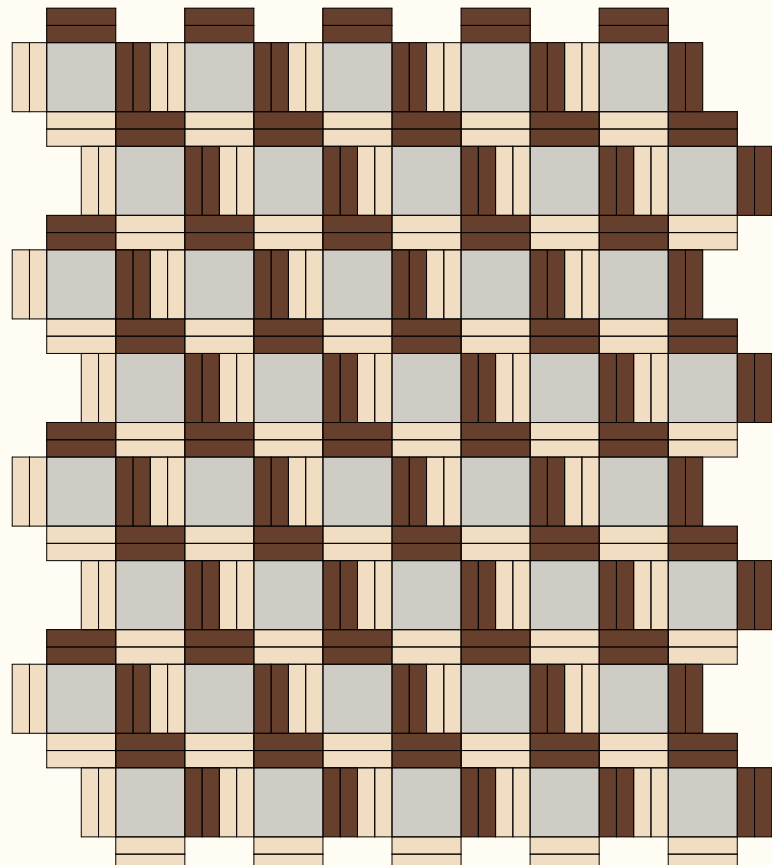


Colors
 66,67% Storm 15x60 cm
 33,33% Storm 60x60 cm



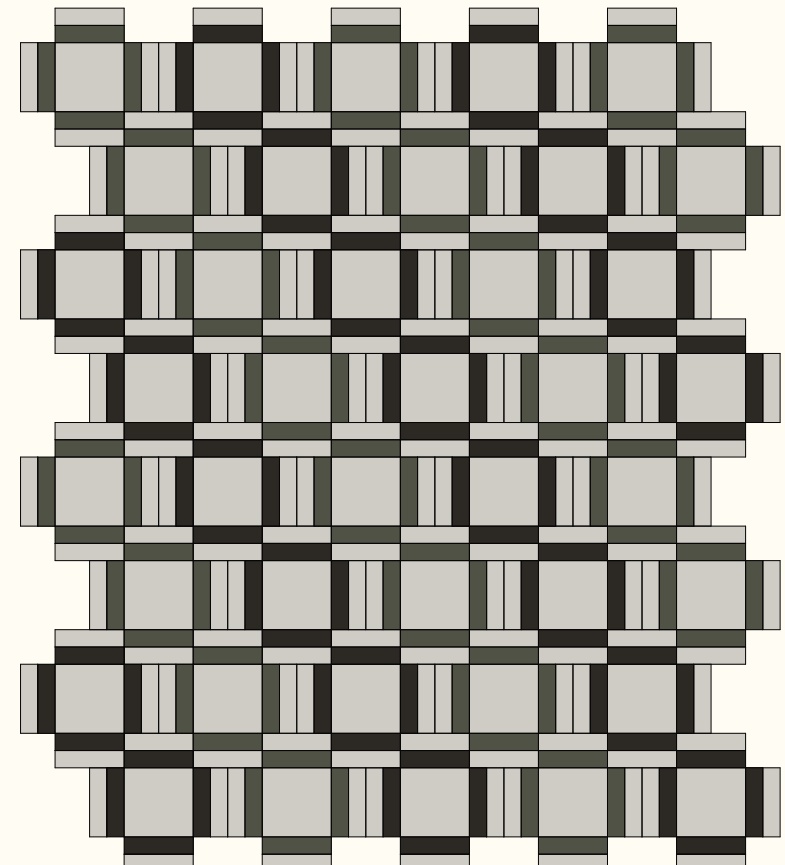
Colors
 66,67% Storm 15x60 cm
 33,33% Grey Green 60x60 cm

2L



Colors
33,33% Bone 15x60 cm
33,33% Terra 15x60 cm
33,33% Storm 60x60 cm

2M

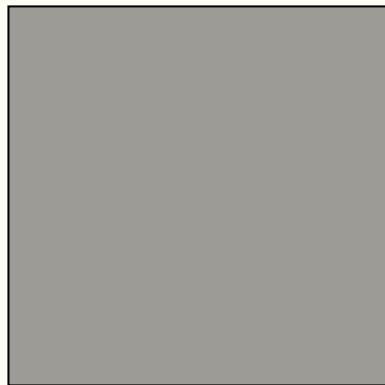


Colors
16,67% Dark Grey 15x60 cm
16,67% Grey Green 15x60 cm
33,33% Storm 15x60 cm
33,33% Storm 60x60 cm

TWO SIZES

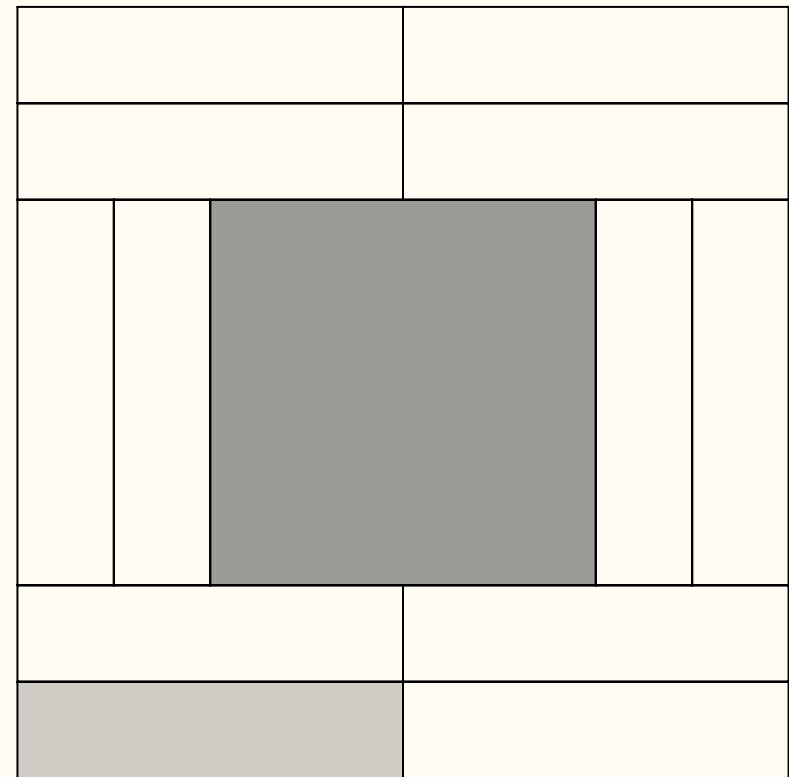


15 x 60 cm

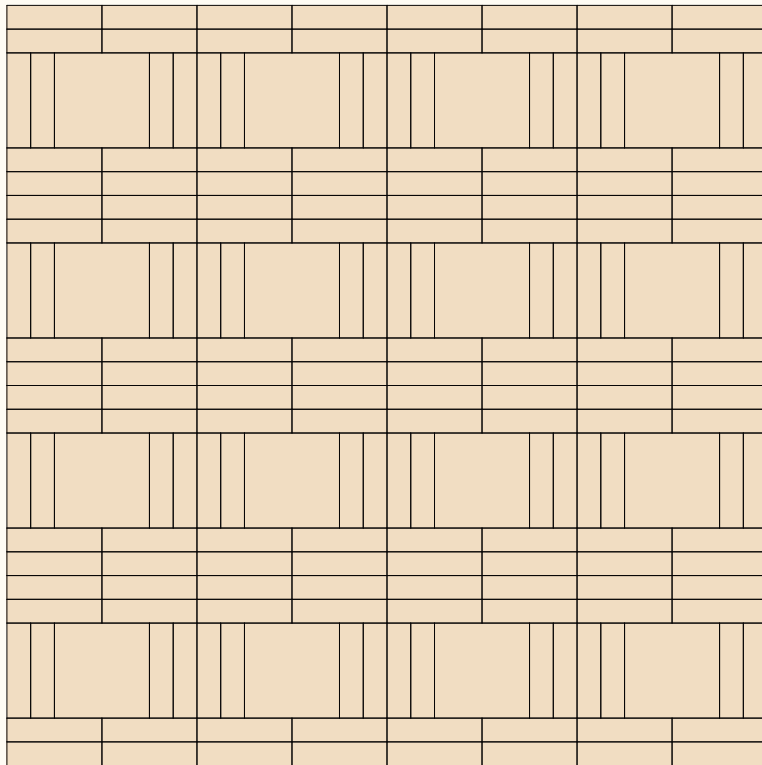


60 x 60 cm

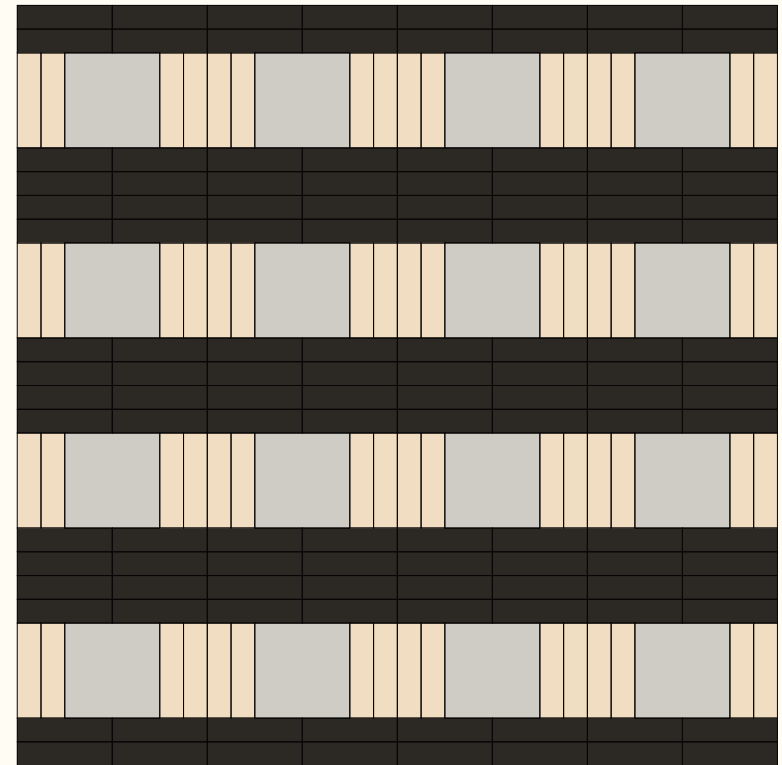
LAYOUT



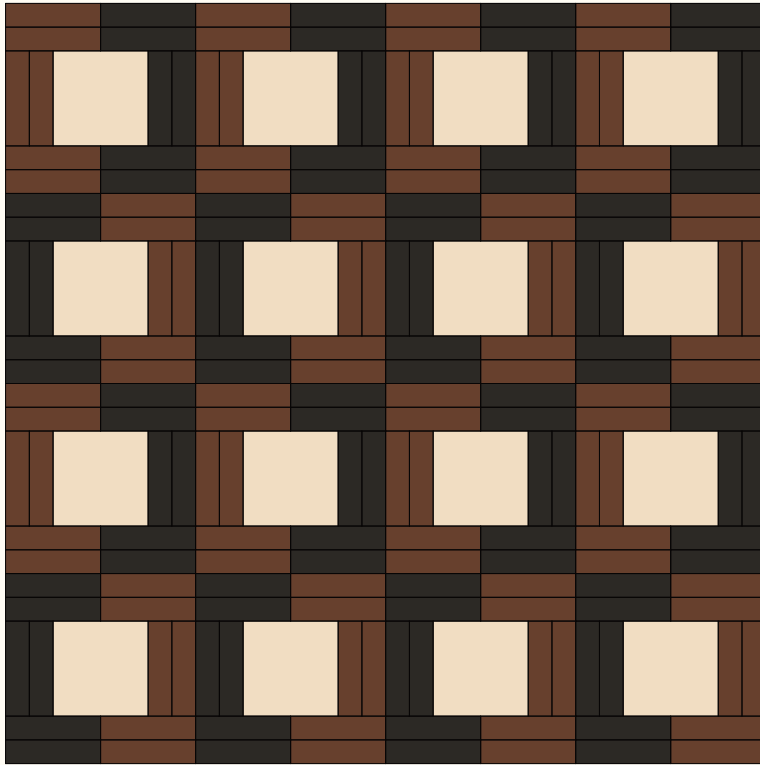
Sizes
75% 15x60 cm
25% 60x60 cm



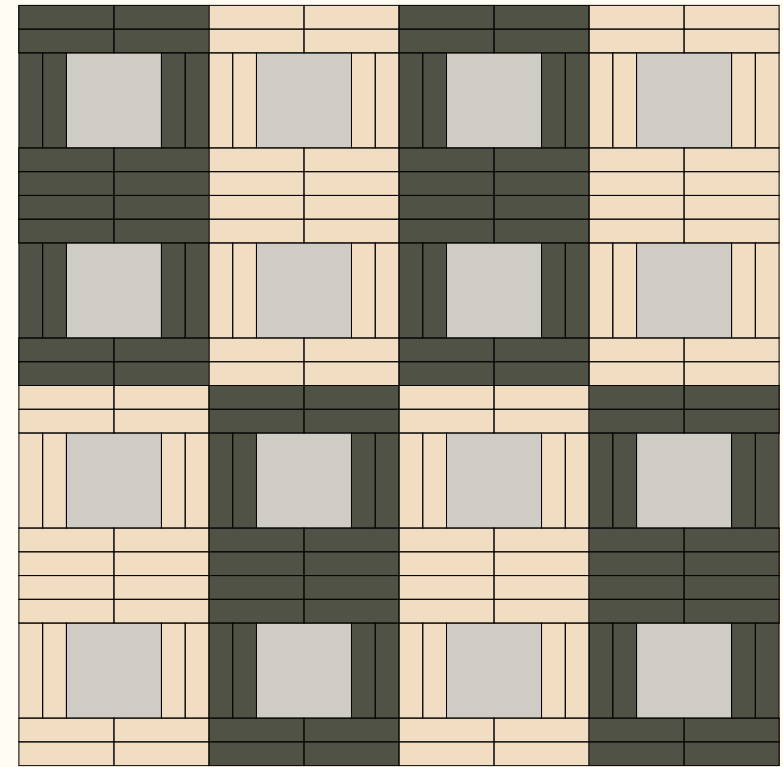
Colors
75% Bone 15x60 cm
25% Bone 60x60 cm



Colors
25% Bone 15x60 cm
50% Dark Grey 15x60 cm
25% Storm 60x60 cm



Colors
 37,5% Terra 15x60 cm
 37,5% Dark Grey 15x60 cm
 25% Bone 60x60 cm



Colors
 37,5% Bone 15x60 cm
 37,5% Grey Green 15x60 cm
 25% Storm 60x60 cm

Three Sizes

THREE SIZES



15 x 30 cm

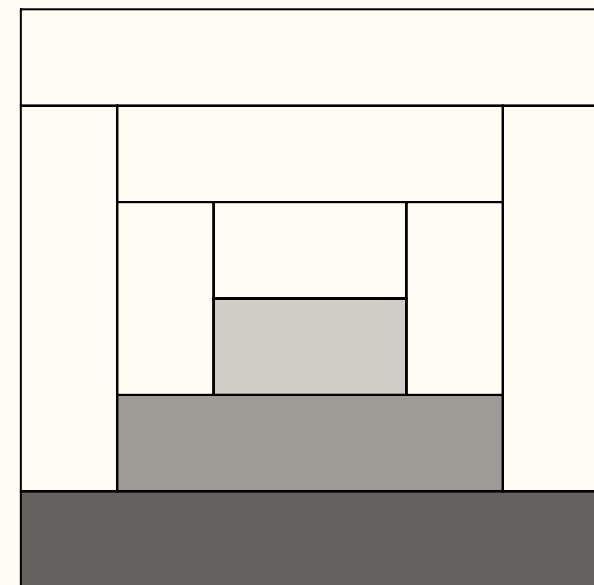


15 x 60 cm



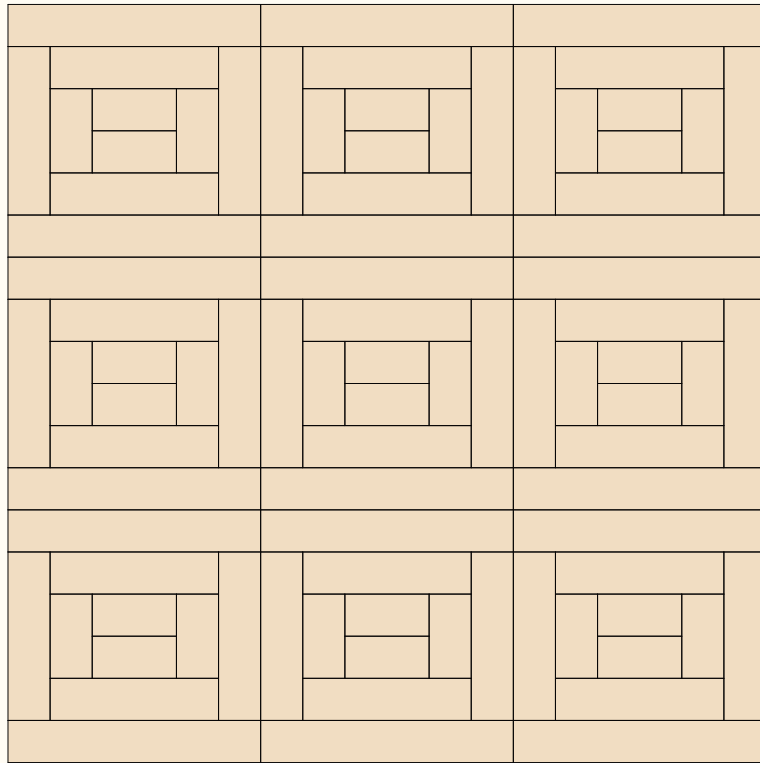
15 x 90 cm

LAYOUT



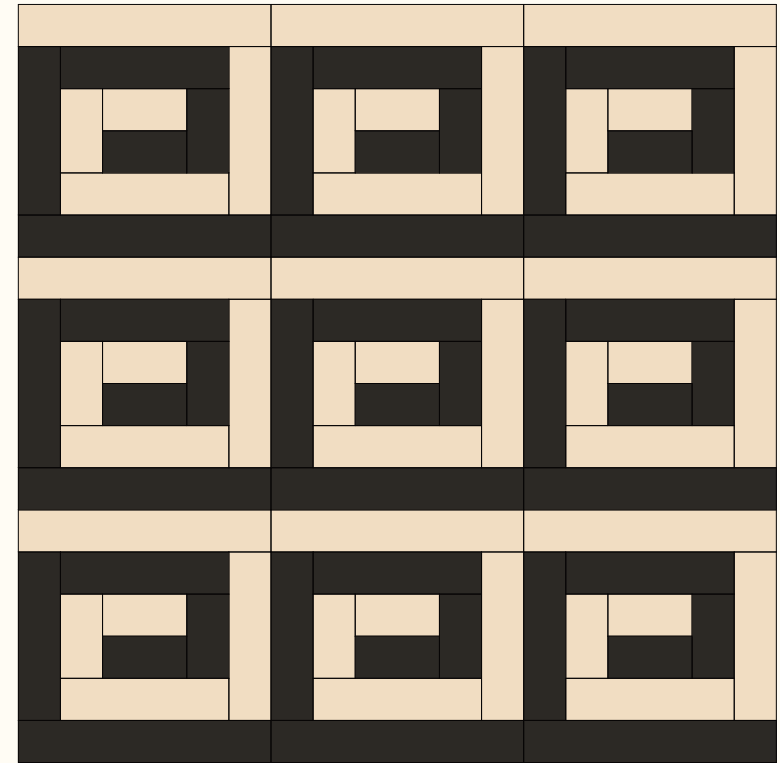
Sizes
22,2% 15x30 cm
44,4% 15x60 cm
33,3% 15x90 cm

3A

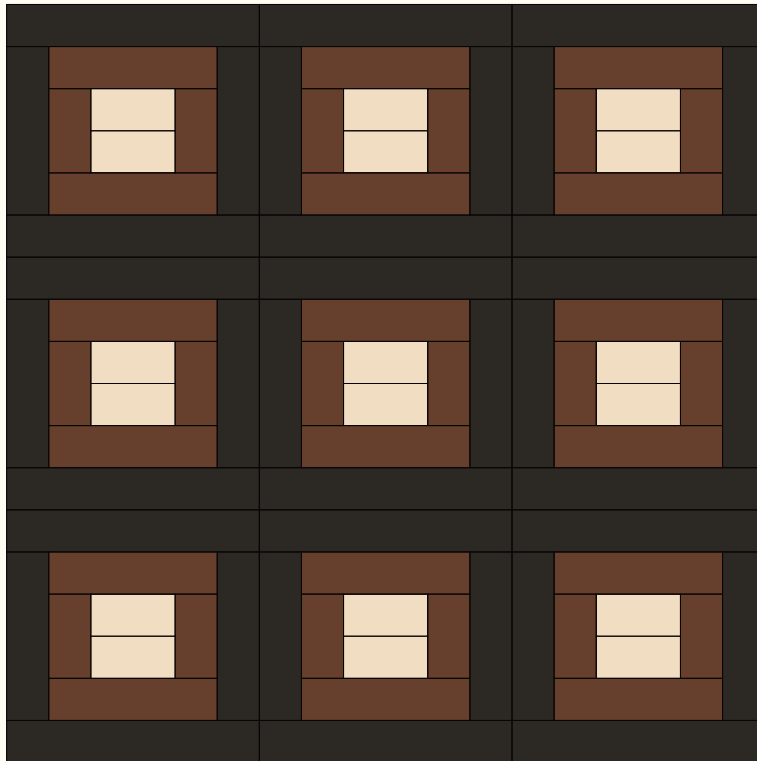


Colors
22,2% Bone 15x30 cm
44,4% Bone 15x60 cm
33,3% Bone 60x60 cm

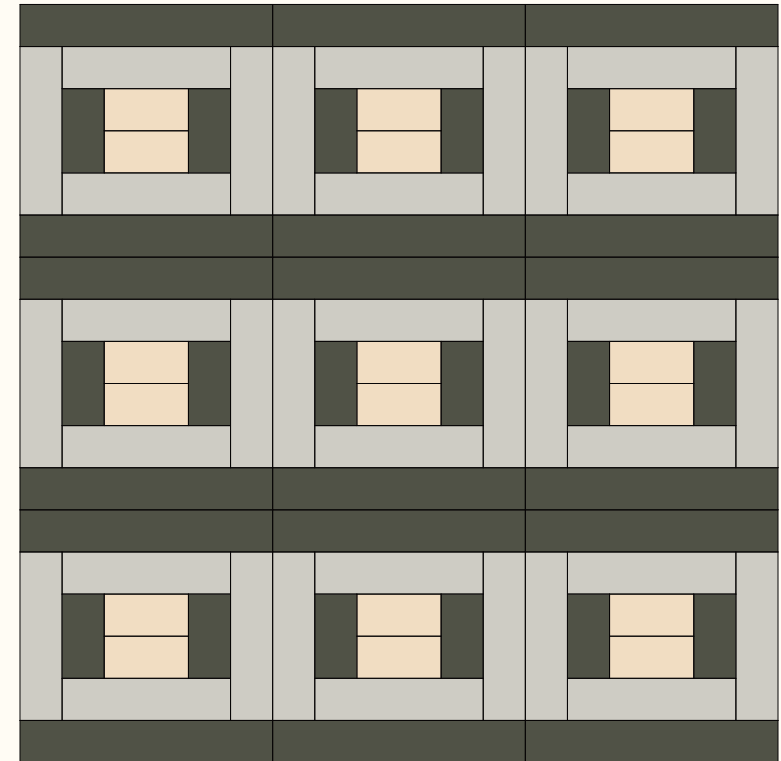
3B



Colors
11,11% Bone 15x30 cm
11,11% Dark Grey 15x30 cm
22,22% Bone 15x60 cm
22,22% Dark Grey 15x60 cm
16,67% Bone 15x90 cm
16,67% Dark Grey 15x90 cm



Colors
 11,11% Bone 15x30 cm
 11,11% Terra 15x30 cm
 22,22% Terra 15x60 cm
 22,22% Dark Grey 15x60 cm
 33,33% Dark Grey 15x90 cm



Colors
 11,11% Bone 15x30 cm
 11,11% Grey Green 15x30 cm
 44,44% Storm 15x60 cm
 33,33% Grey Green 15x90 cm

THREE SIZES



15 x 15 cm

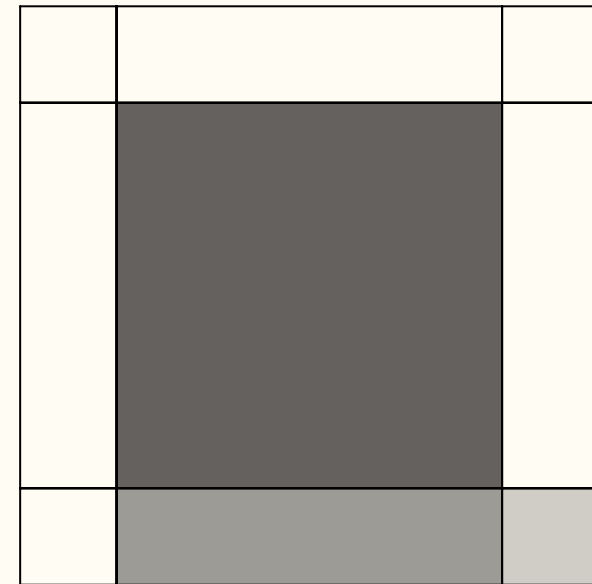


15 x 60 cm



60 x 60 cm

LAYOUT

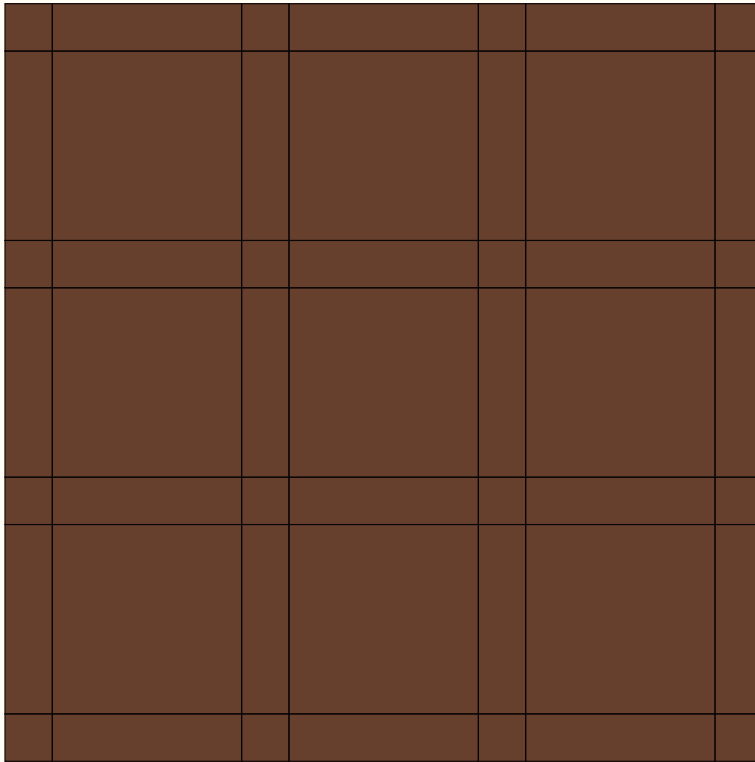


Sizes

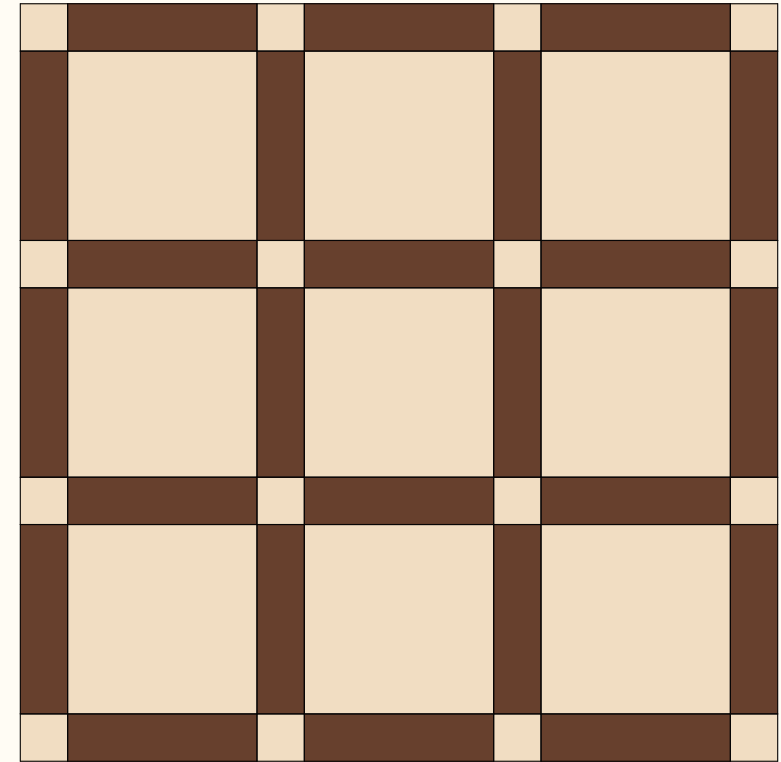
11,11% 15x15 cm

44,44% 15x60 cm

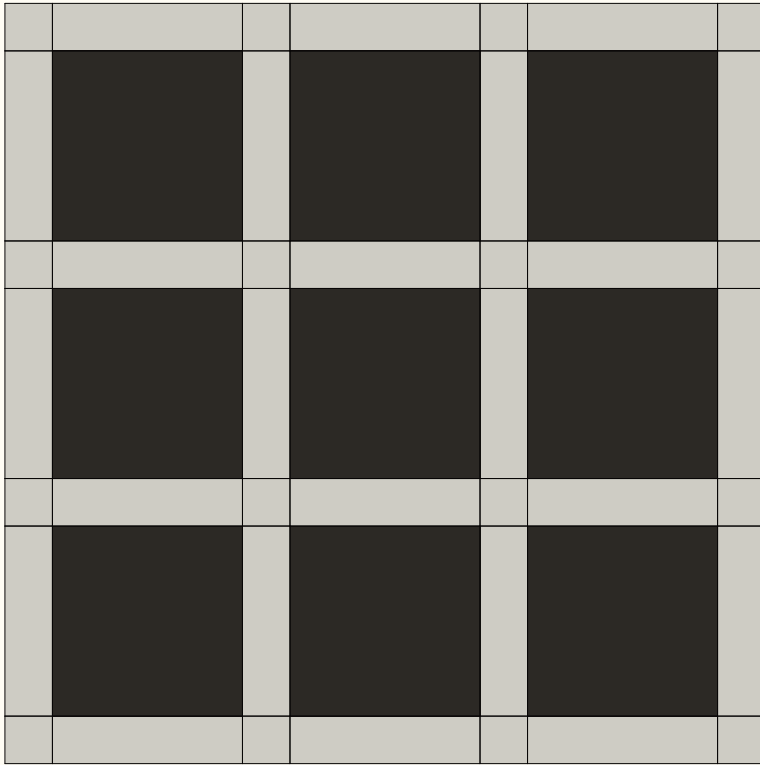
44,44% 60x60 cm



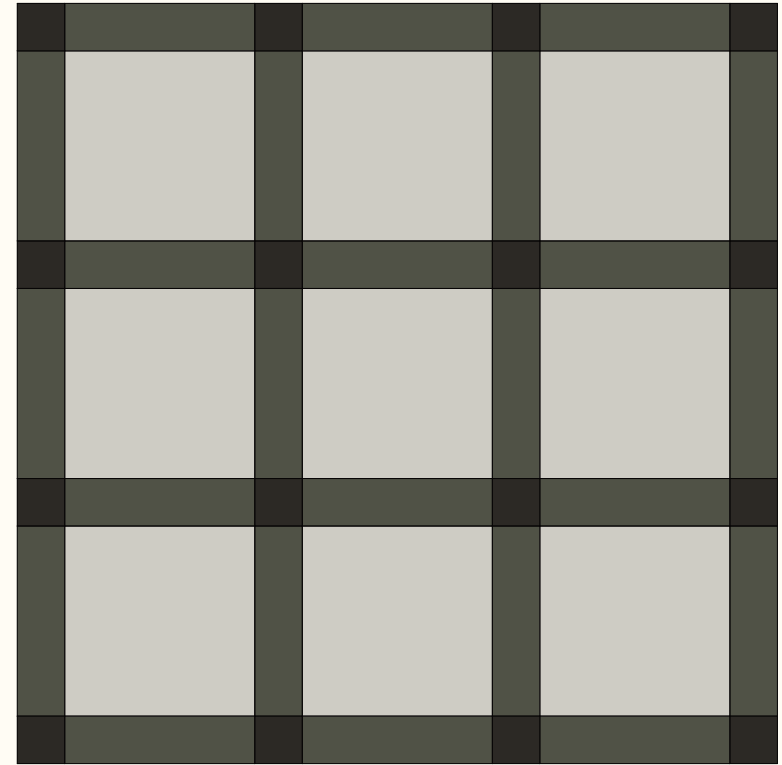
Colors
 11,11% Terra 15x15 cm
 44,44% Terra 15x60 cm
 44,44% Terra 60x60 cm



Colors
 11,11% Bone 15x15 cm
 44,44% Terra 15x60 cm
 44,44% Bone 60x60 cm

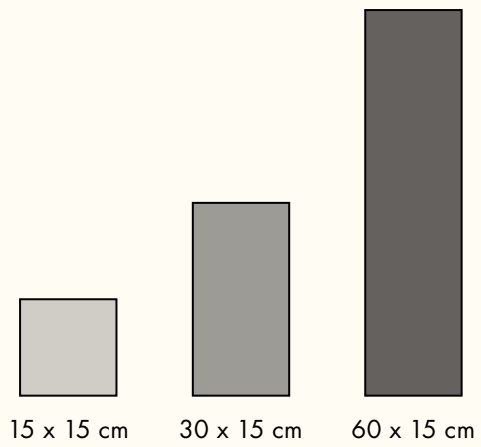


Colors
 11,11% Storm 15x15 cm
 44,44% Storm 15x60 cm
 44,44% Dark Grey 60x60 cm

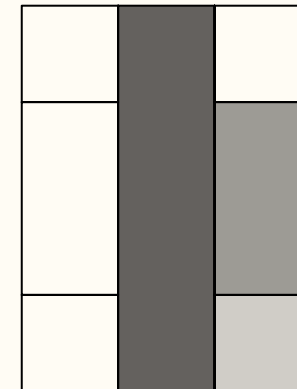


Colors
 11,11% Dark Grey 15x15 cm
 44,44% Grey Green 15x60 cm
 44,44% Storm 60x60 cm

THREE SIZES

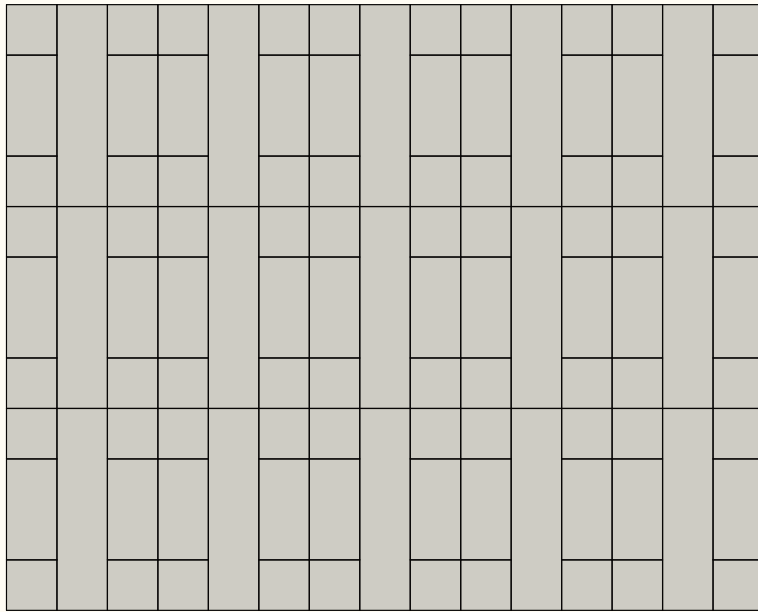


LAYOUT



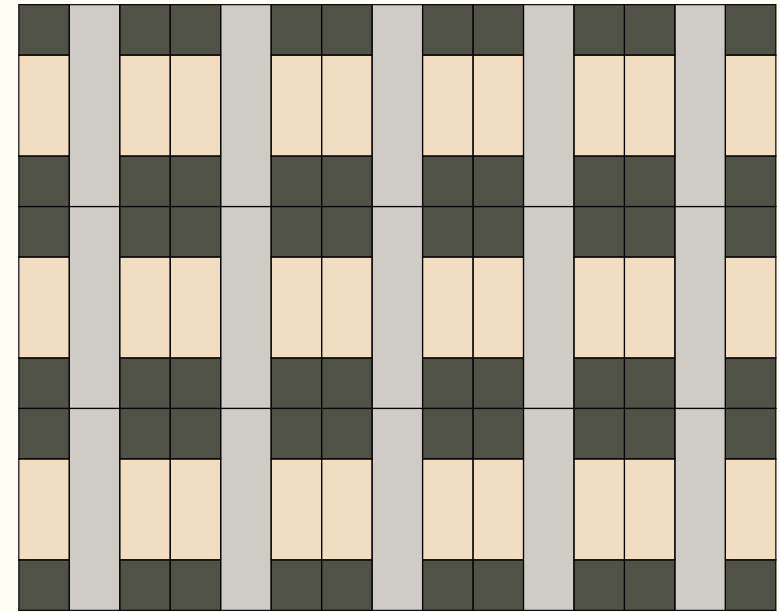
Sizes
33,33% 15x15 cm
33,33% 30x15 cm
33,33% 60x15 cm

3J

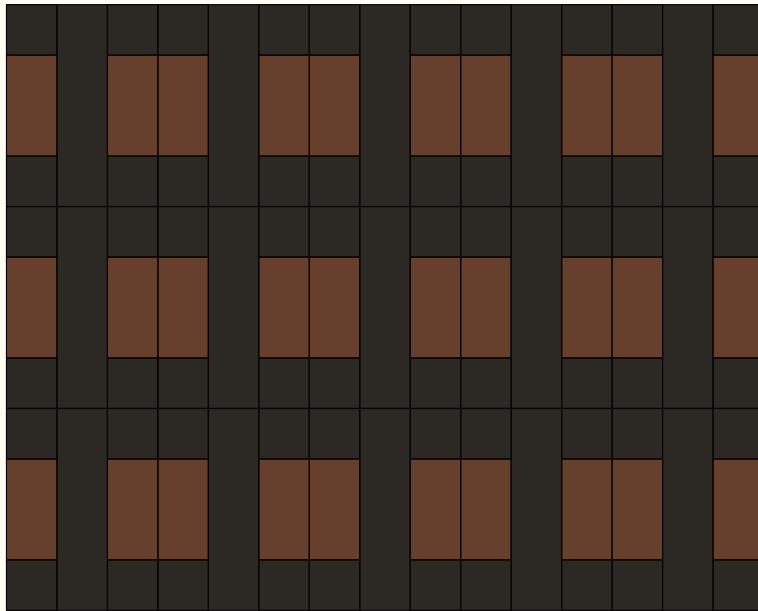


Colors
33,33% Storm 15x15 cm
33,33% Storm 30x15 cm
33,33% Storm 60x15 cm

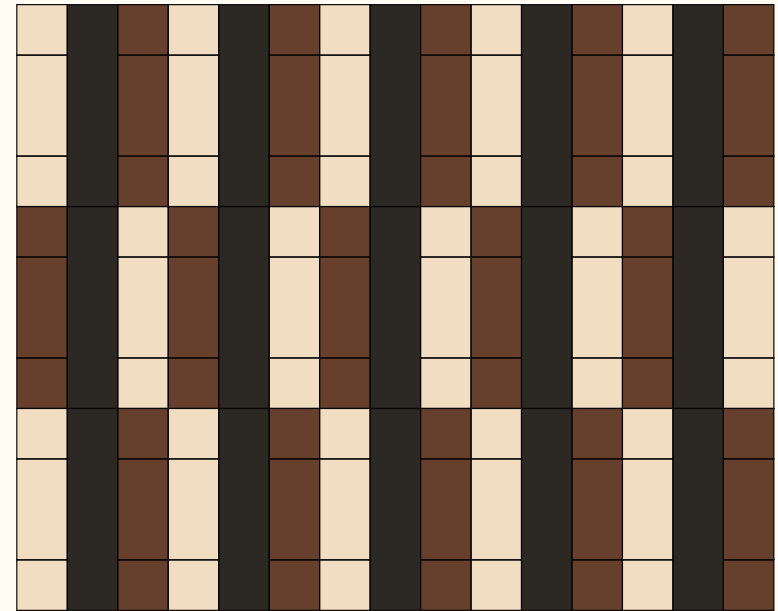
3K



Colors
33,33% Grey Green 15x15 cm
33,33% Bone 30x15 cm
33,33% Storm 60x15 cm



Colors
 33,33% Dark Grey 15x15 cm
 33,33% Terra 30x15 cm
 33,33% Dark Grey 60x15 cm



Colors
 16,67% Bone 15x15 cm
 16,67% Terra 15x15 cm
 16,67% Bone 30x15 cm
 16,67% Terra 30x15 cm
 33,33% Dark Grey 60x15 cm

THREE SIZES



30 x 15 cm

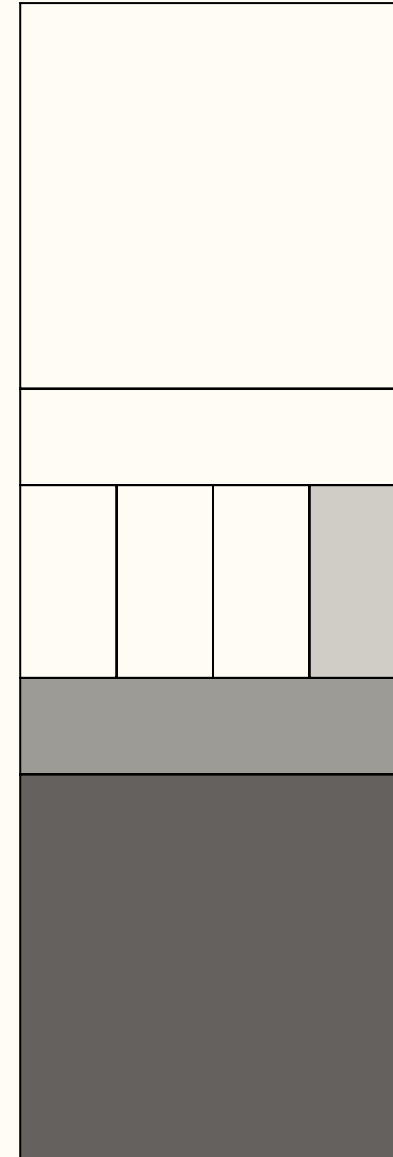


15 x 60 cm



60 x 60 cm

LAYOUT



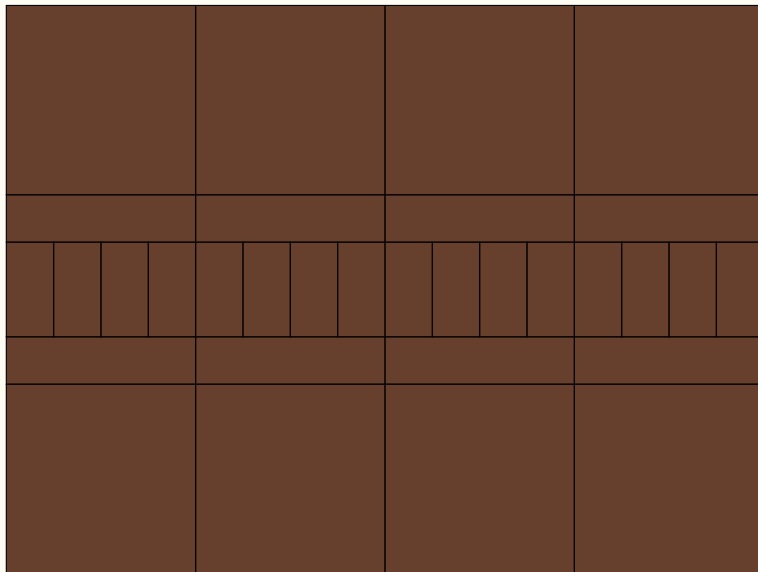
Sizes

16,67% 30x15 cm

16,67% 15x60 cm

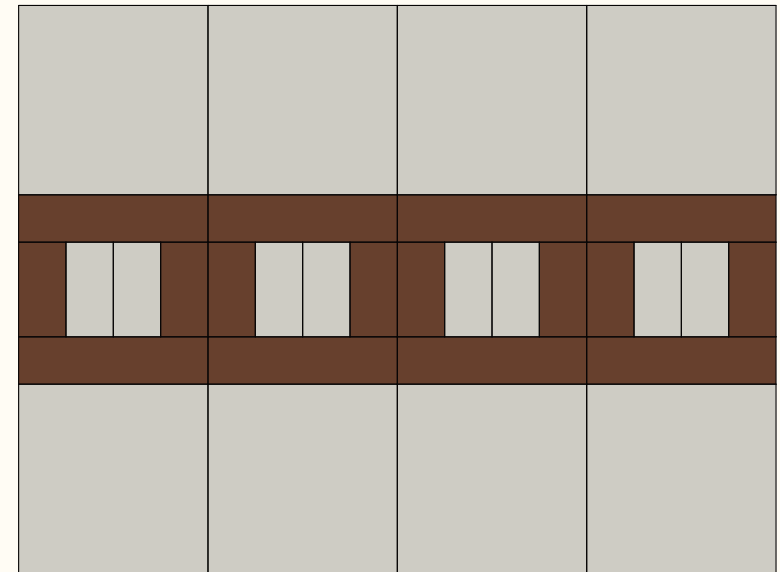
66,67% 60x60 cm

3N



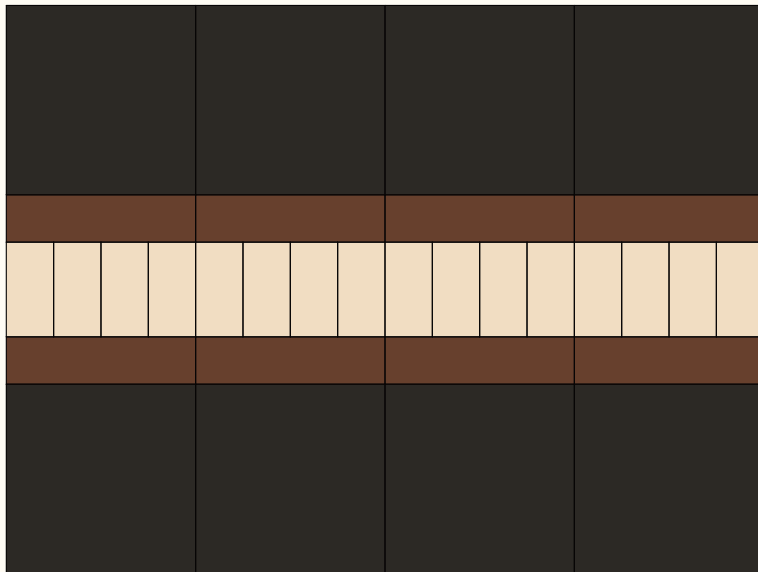
Colors
16,67% Terra 30x15 cm
16,67% Terra 15x60 cm
66,67% Terra 60x60 cm

3P



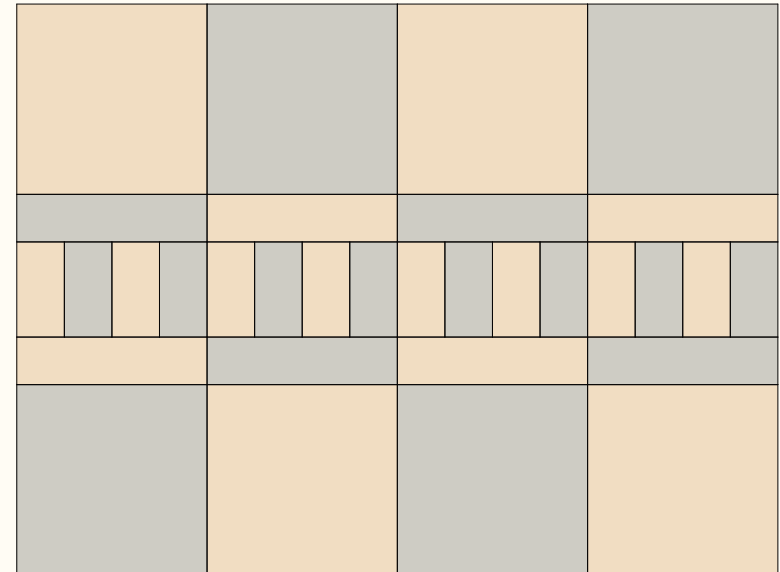
Colors
8,33% Terra 30x15 cm
8,33% Storm 30x15 cm
16,67% Terra 15x60 cm
66,67% Storm 60x60 cm

3Q



Colors
16,67% Bone 30x15 cm
16,67% Terra 15x60 cm
66,67% Dark Grey 60x60 cm

3R



Colors
8,33% Bone 30x15 cm
8,33% Storm 30x15 cm
8,33% Bone 15x60 cm
8,33% Storm 15x60 cm
33,33% Storm 60x60 cm
33,33% Bone 60x60 cm

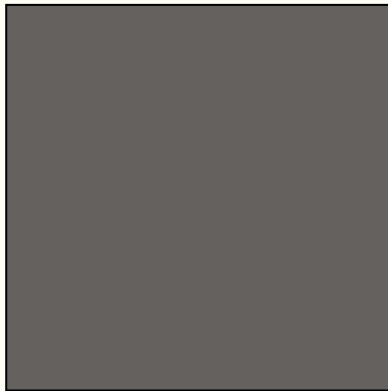
THREE SIZES



30 x 15 cm

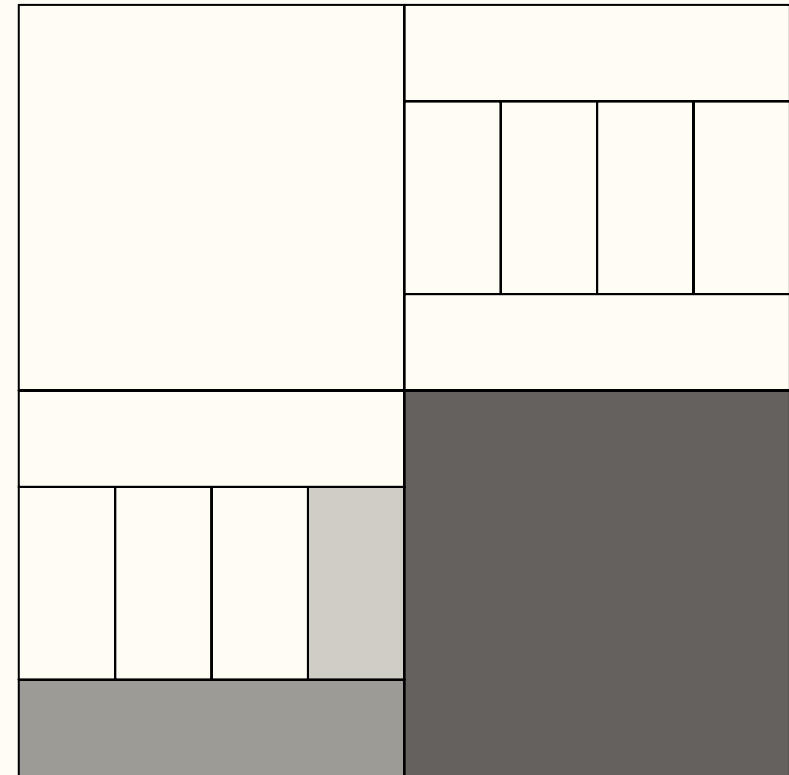


15 x 60 cm

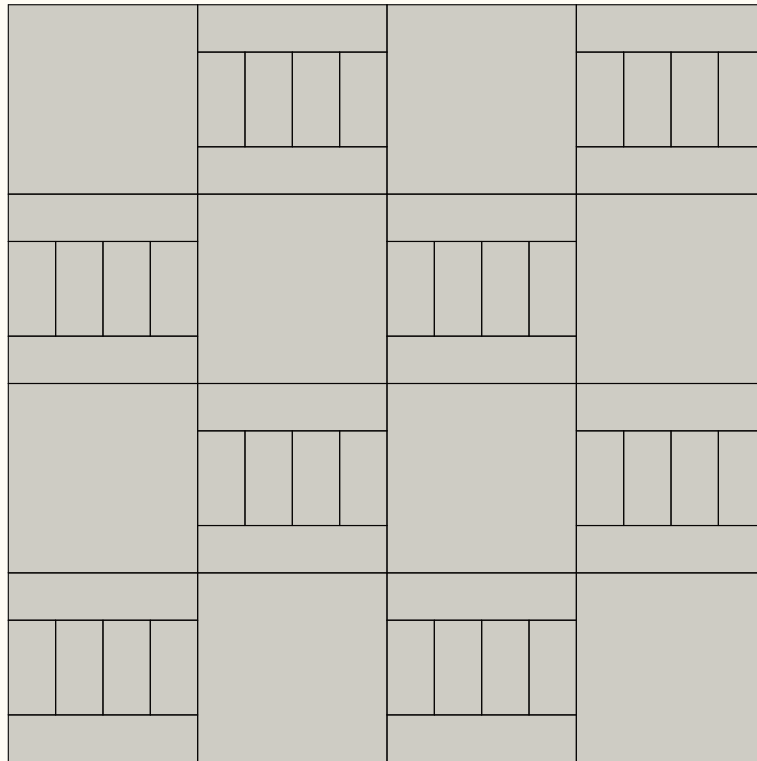


60 x 60 cm

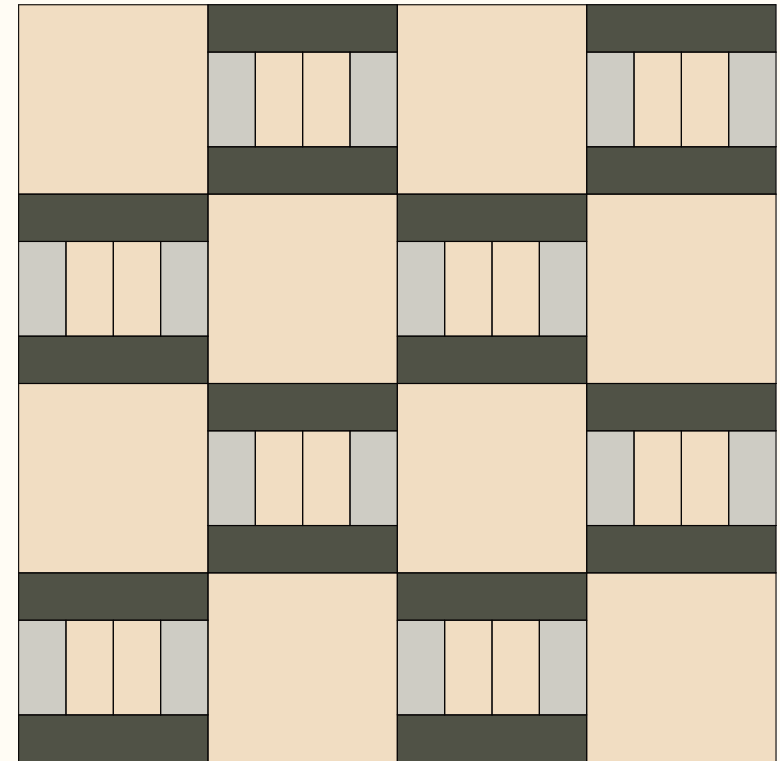
LAYOUT



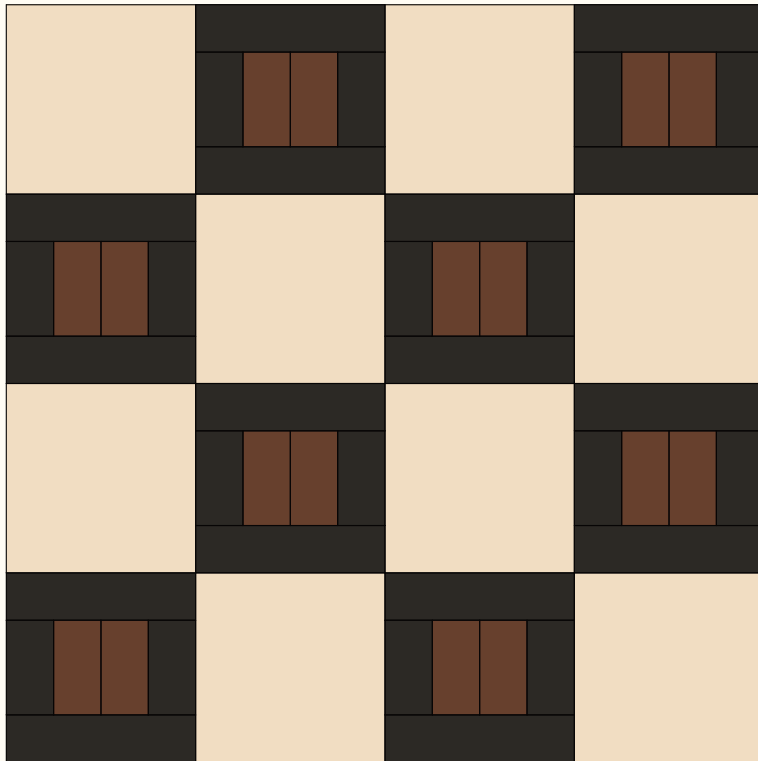
Sizes
25% 30x15 cm
25% 15x60 cm
50% 60x60 cm



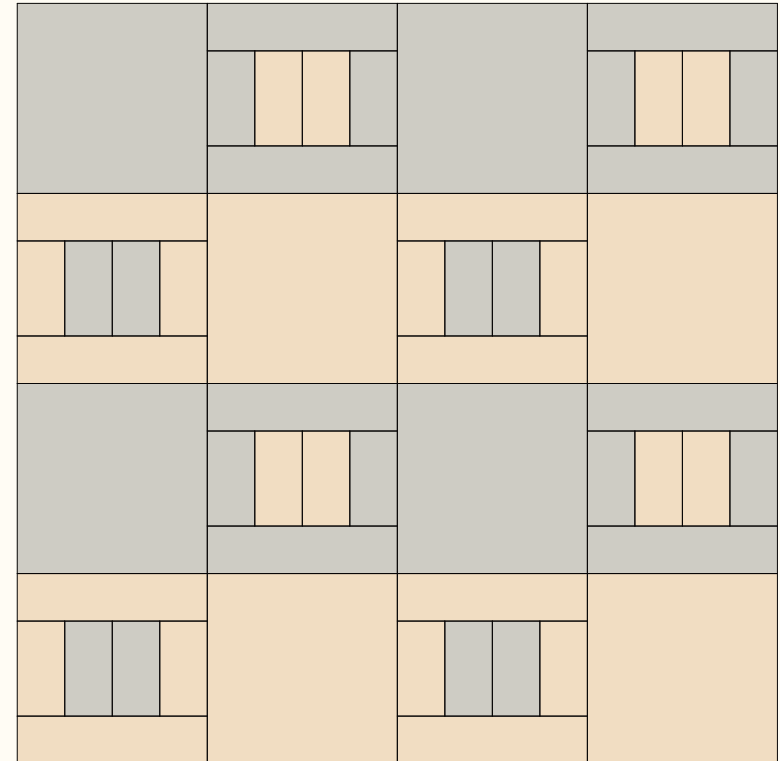
Colors
 25% Storm 30x15 cm
 25% Storm 15x60 cm
 50% Storm 60x60 cm



Colors
 12,5% Storm 30x15 cm
 12,5% Bone 30x15 cm
 25% Grey Green 15x60 cm
 50% Bone 60x60 cm



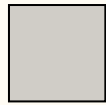
Colors
 12,5% Terra 30x15 cm
 12,5% Dark Grey 30x15 cm
 25% Dark Grey 15x60 cm
 50% Bone 60x60 cm



Colors
 12,5% Storm 30x15 cm
 12,5% Bone 30x15 cm
 12,5% Storm 15x60 cm
 12,5% Bone 15x60 cm
 25% Storm 60x60 cm
 25% Bone 60x60 cm

Four Sizes

FOUR SIZES



15 x 15 cm



15 x 30 cm

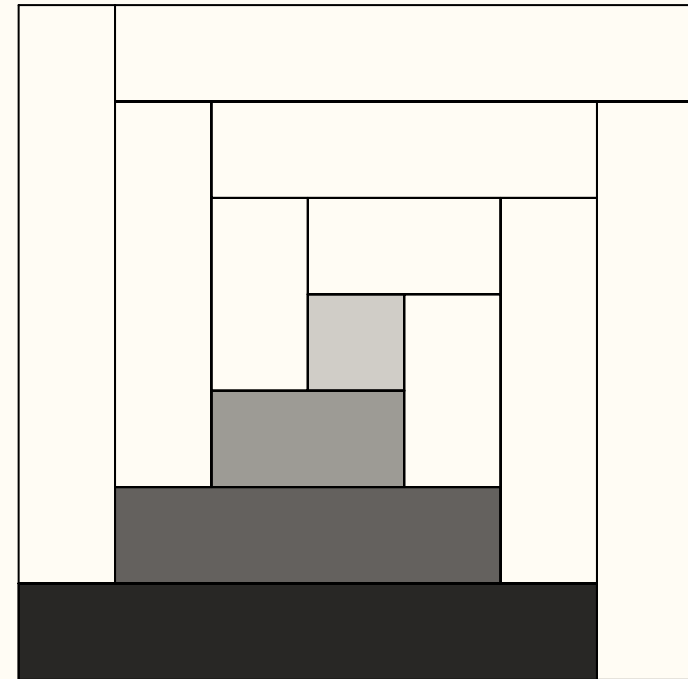


15 x 60 cm



15 x 90 cm

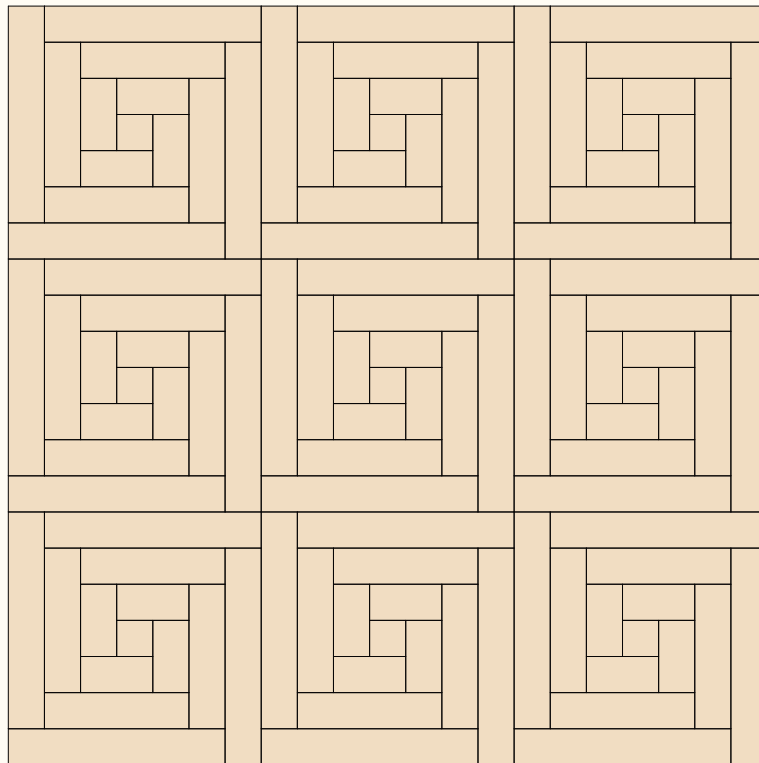
LAYOUT



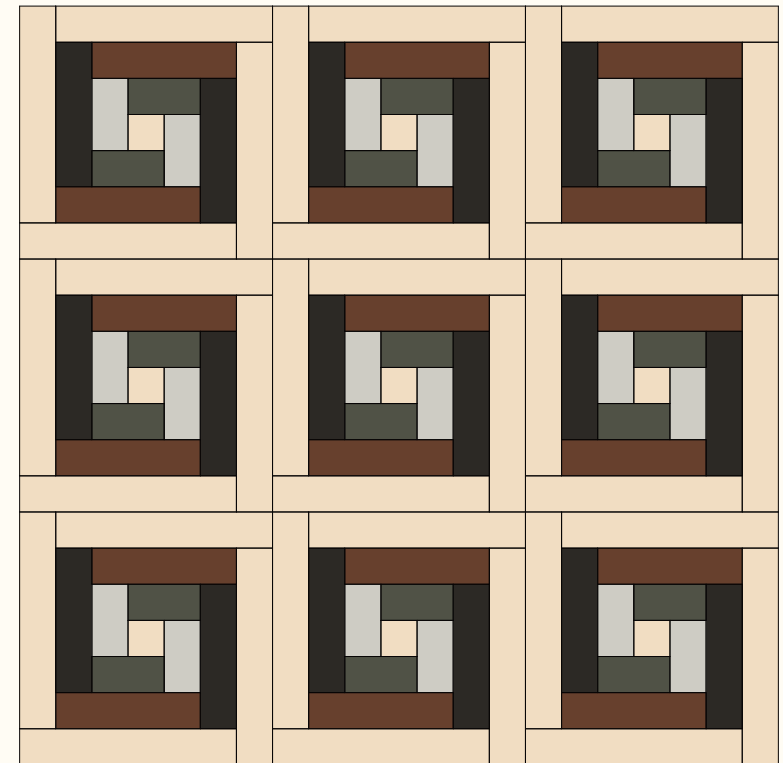
Sizes
2% 15x15 cm
16,3% 15x30 cm
32,7% 15x60 cm
49% 15x90 cm

4A

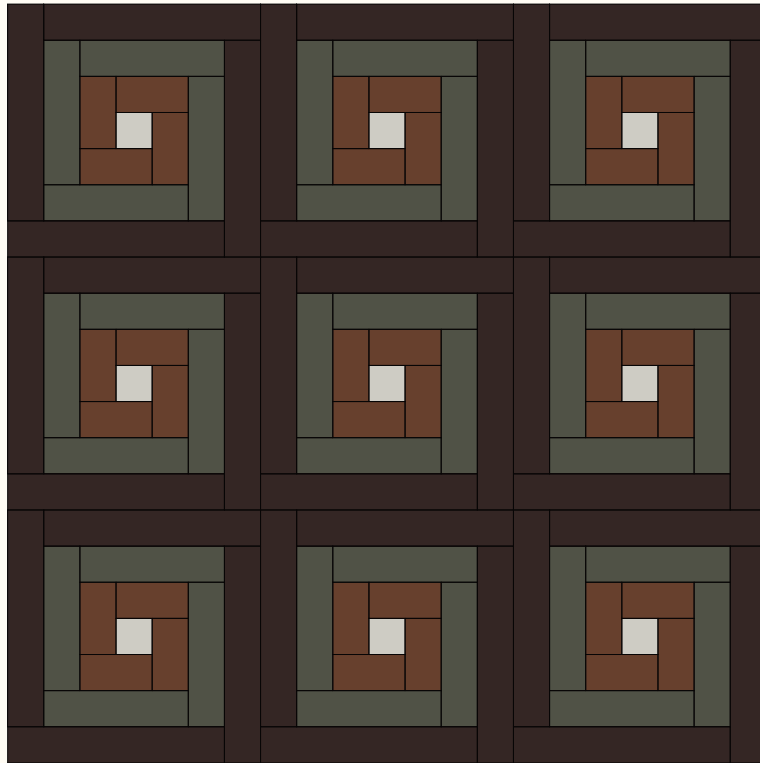
4B



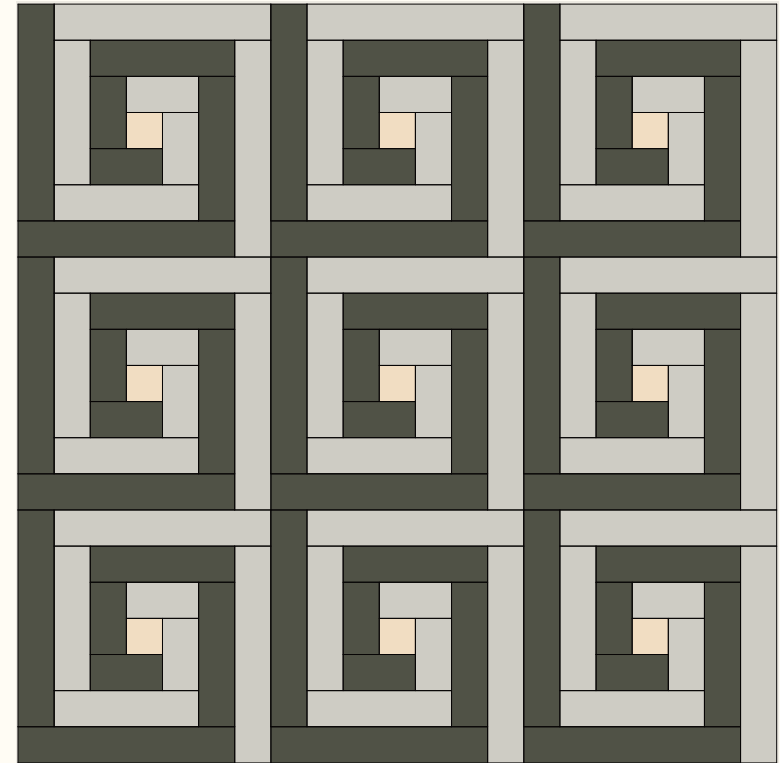
Colors
2% Bone 15x15 cm
16,3% Bone 15x30 cm
32,7% Bone 15x60 cm
49% Bone 15x90 cm



Colors
2% Bone 15x15 cm
8,2% Bone 15x30 cm
8,2% Grey Green 15x30 cm
16,3% Terra 15x60 cm
16,3% Dark Grey 15x60 cm
49% Bone 15x90 cm

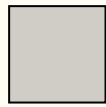


Colors
 2% Storm 15x15 cm
 16,3% Terra 15x30 cm
 32,7% Grey Green 15x60 cm
 49% Dark Grey 15x90 cm



Colors
 2% Bone 15x15 cm
 8,2% Storm 15x30 cm
 8,2% Grey Green 15x30 cm
 16,3% Grey Green 15x60 cm
 16,3% Storm 15x60 cm
 24,5% Storm 15x90 cm
 24,5% Grey Green 15x90 cm

FOUR SIZES



15 x 15 cm



30 x 15 cm

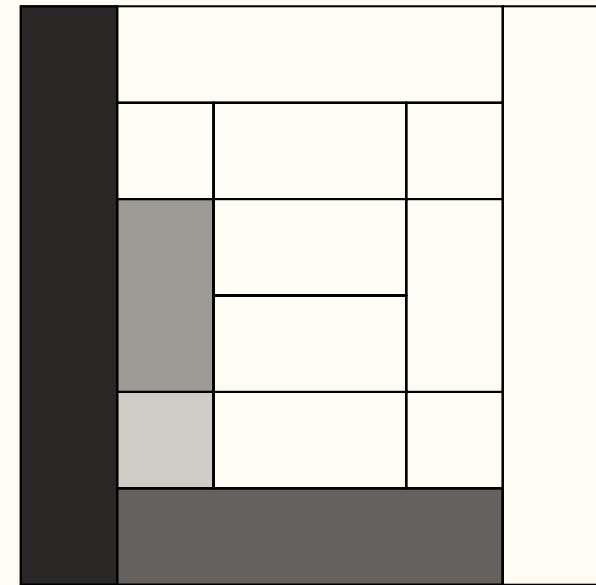


15 x 60 cm

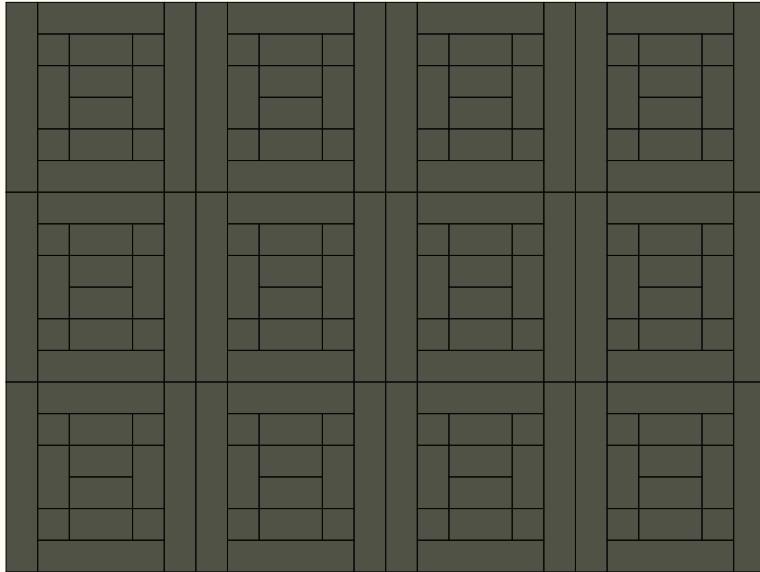


15 x 90 cm

LAYOUT

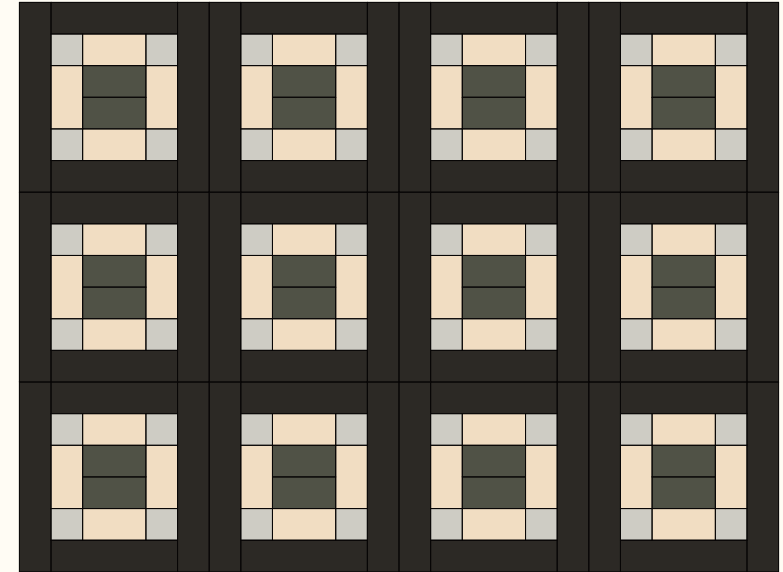


Sizes
11,11% 15x15 cm
33,33% 30x15 cm
22,22% 15x60 cm
33,33% 15x90 cm



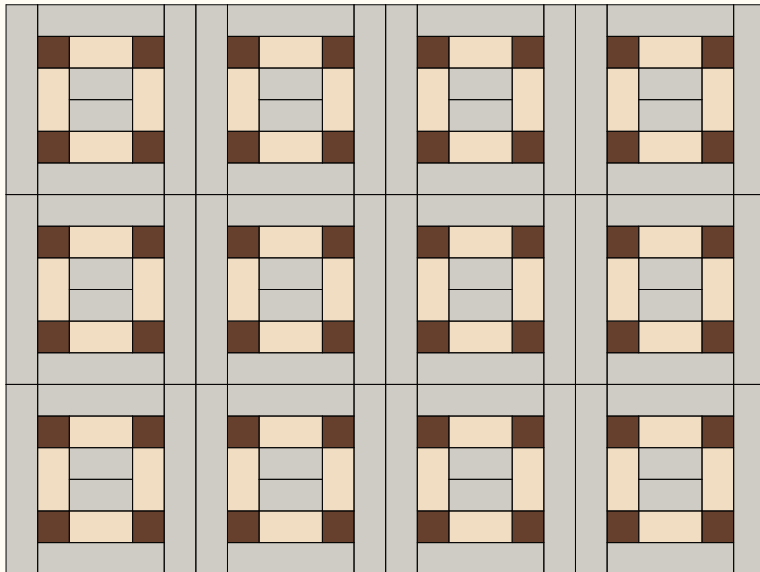
Colors

11,11% Grey Green 15x15 cm
 33,33% Grey Green 30x15 cm
 22,22% Grey Green 15x60 cm
 33,33% Grey Green 15x90 cm



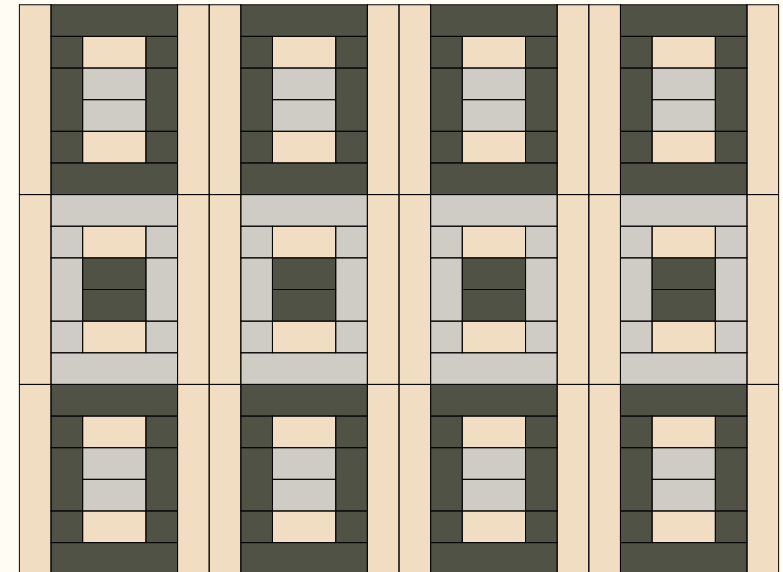
Colors

11,11% Storm 15x15 cm
 11,11% Grey Green 30x15 cm
 22,22% Bone 30x15 cm
 22,22% Dark Grey 15x60 cm
 33,33% Dark Grey 15x90 cm



Colors

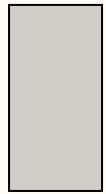
11,11% Terra 15x15 cm
 11,11% Storm 30x15 cm
 22,22% Bone 30x15 cm
 22,22% Storm 15x60 cm
 33,33% Storm 15x90 cm



Colors

11,11% Grey Green 15x15 cm
 11,11% Storm 30x15 cm
 11,11% Bone 30x15 cm
 11,11% Grey Green 30x15 cm
 22,22% Grey Green 15x60 cm
 33,33% Bone 15x90 cm

FOUR SIZES



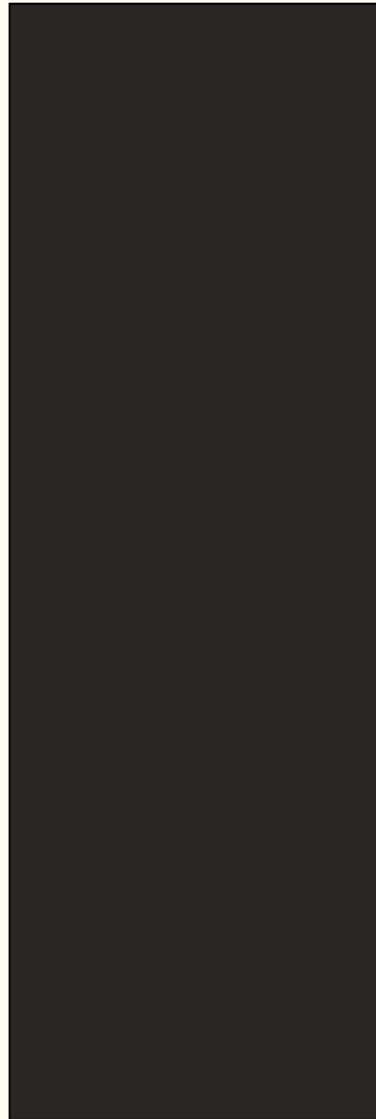
30 x 15 cm



15 x 60 cm

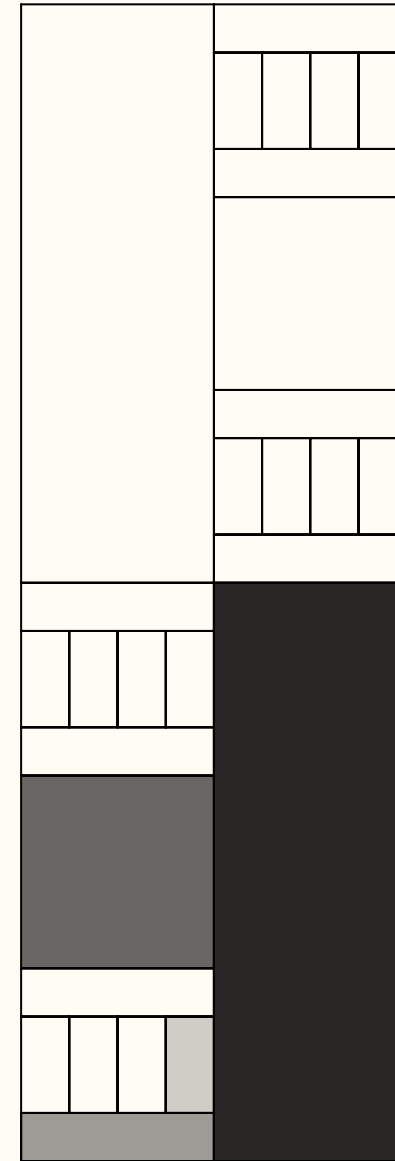


60 x 60 cm

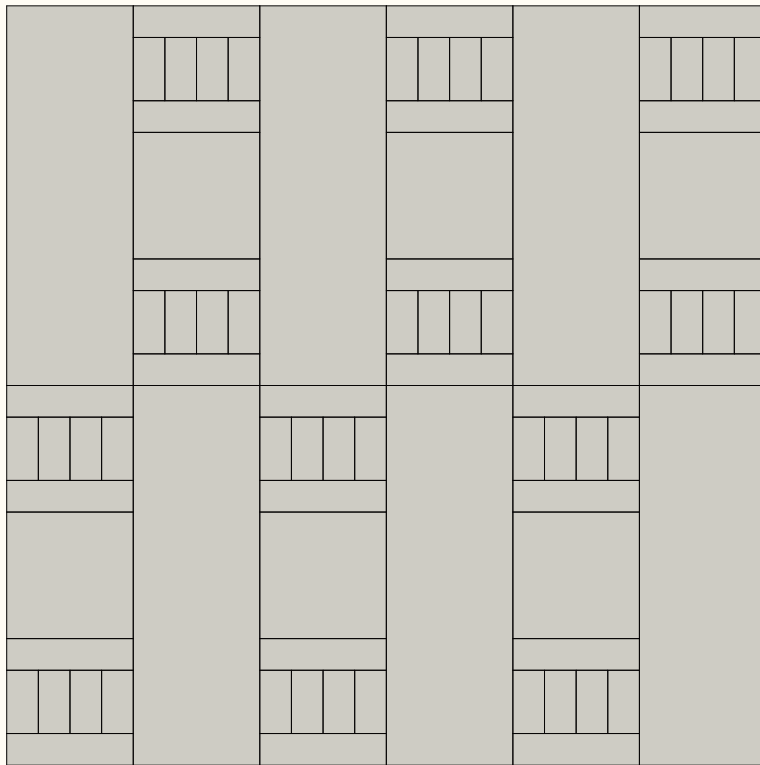


180 x 60 cm

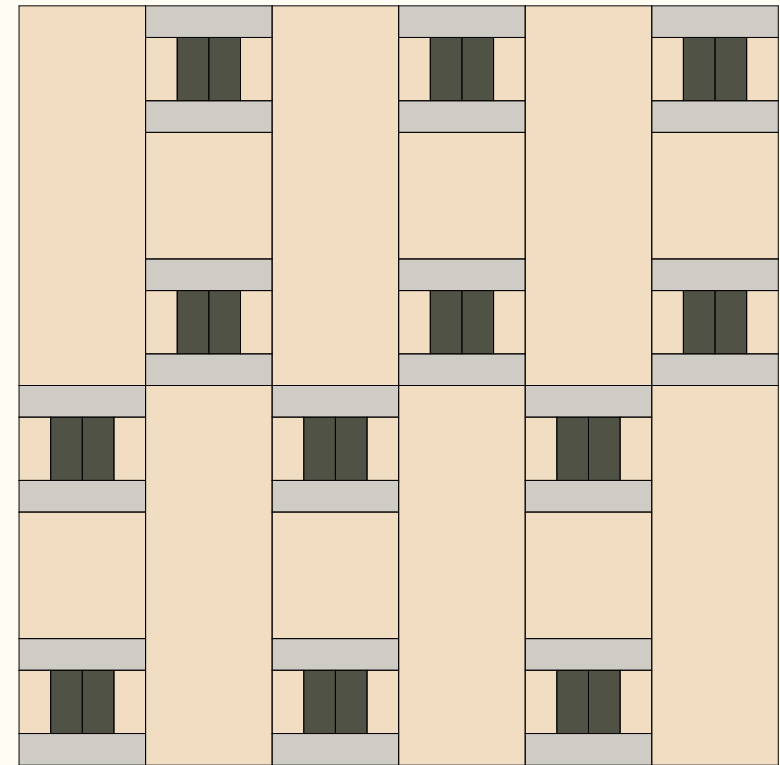
LAYOUT



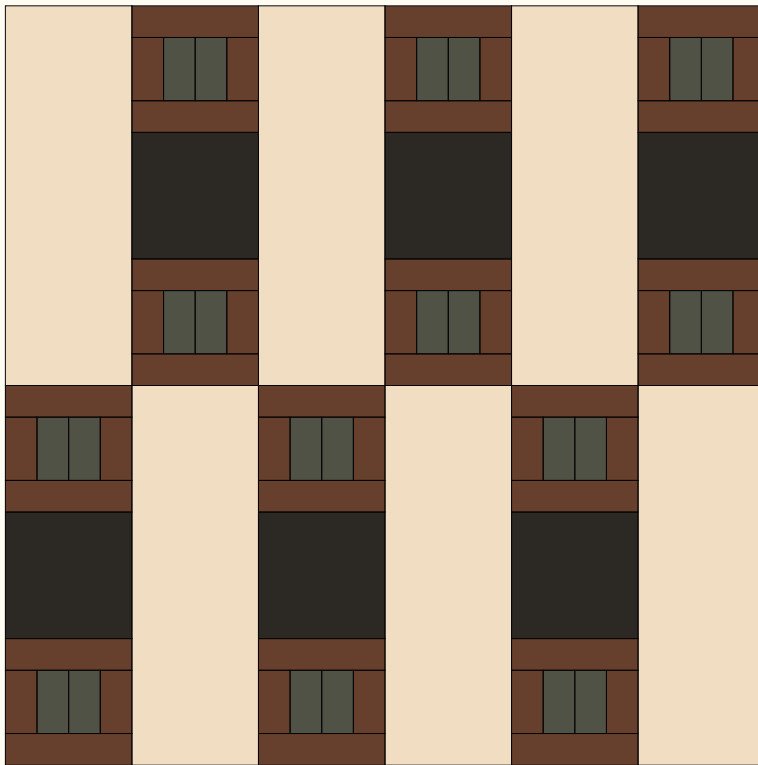
Sizes
16,67% 30x15 cm
16,67% 15x60 cm
16,67% 60x60 cm
50% 180x60 cm



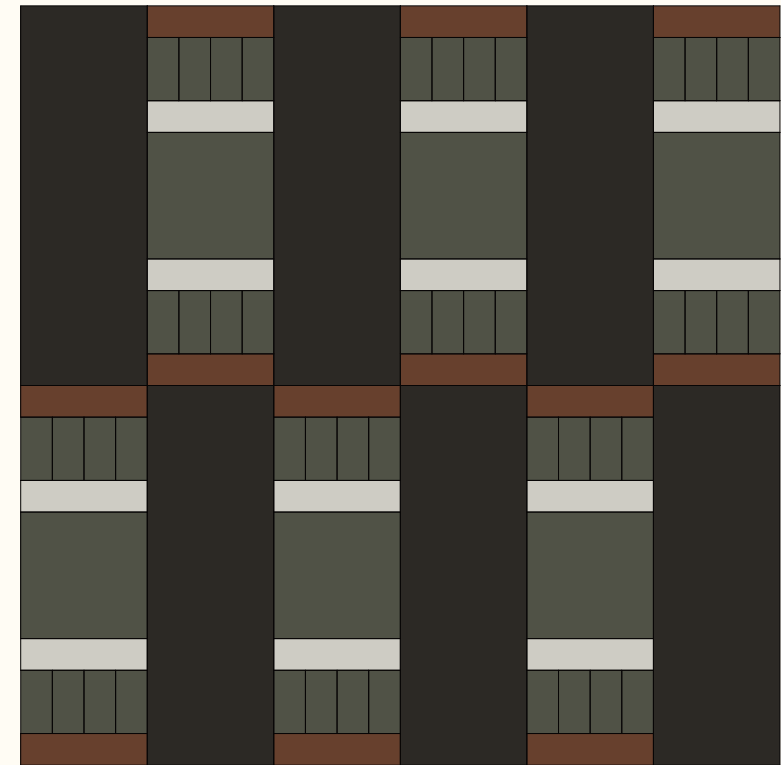
Colors
 16,67% Storm 30x15 cm
 16,67% Storm 15x60 cm
 16,67% Storm 60x60 cm
 50% Storm 180x60 cm



Colors
 8,33% Bone 30x15 cm
 8,33% Grey Green 30x15 cm
 16,67% Storm 15x60 cm
 16,67% Bone 60x60 cm
 50% Bone 180x60 cm



Colors
 8,33% Grey Green 30x15 cm
 8,33% Terra 30x15 cm
 16,67% Terra 15x60 cm
 16,67% Dark Grey 60x60 cm
 50% Bone 180x60 cm

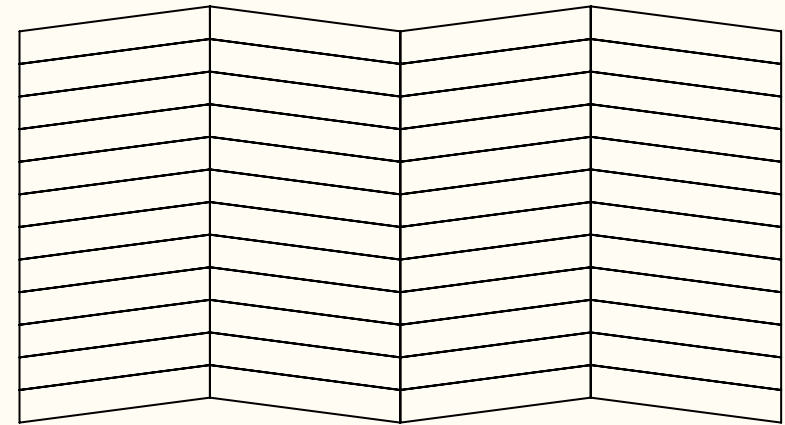
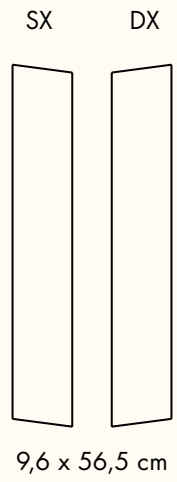


Colors
 16,67% Grey Green 30x15 cm
 8,33% Storm 15x60 cm
 8,33% Terra 15x60 cm
 16,67% Grey Green 60x60 cm
 50% Dark Grey 180x60 cm

Chevron

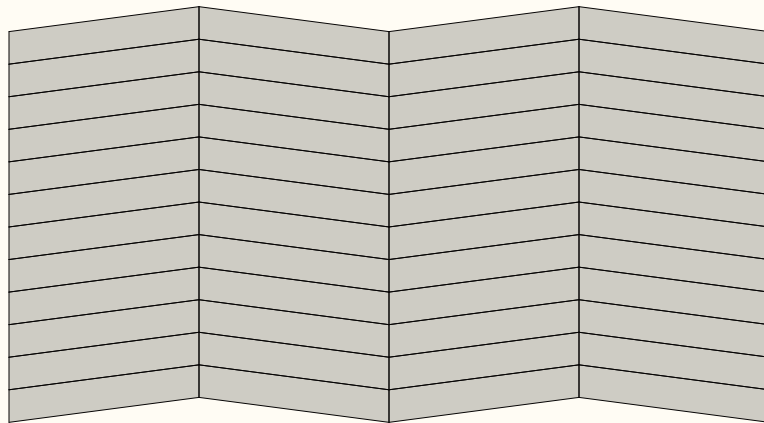
CHEVRON

LAYOUT



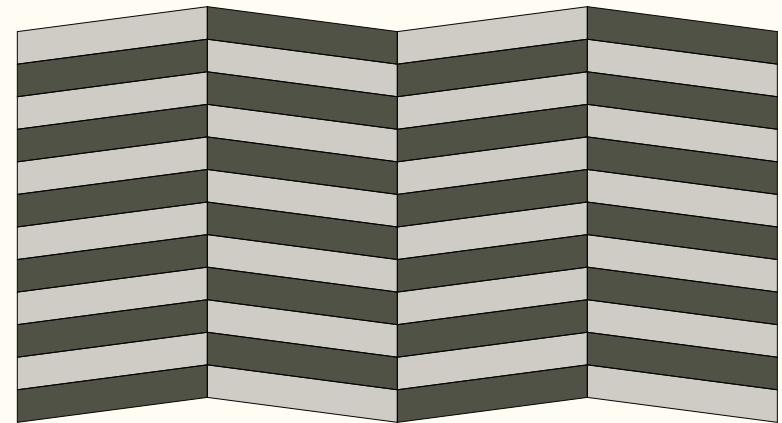
Sizes
100% 9,6x56,5 chevron

CHEVRON A



Colors
100% Storm 9,6x56,5 chevron

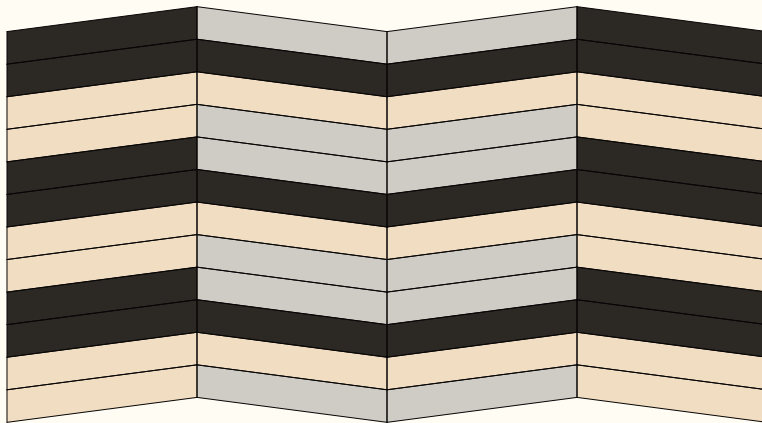
CHEVRON B



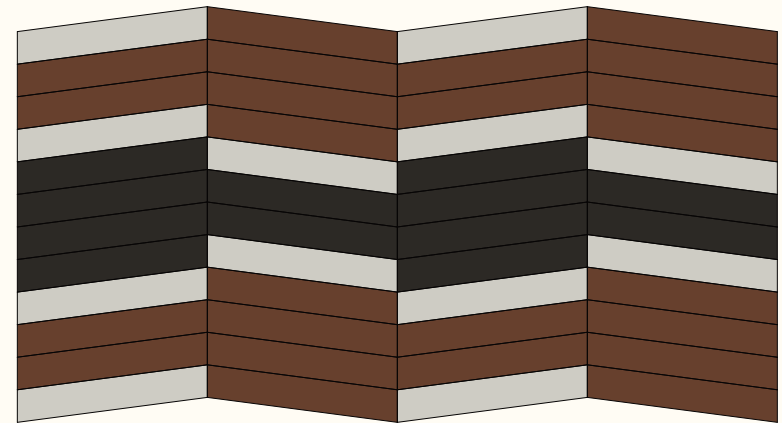
Colors
50% Storm 9,6x56,5 chevron
50% Grey Green 9,6x56,5 chevron

CHEVRON C

CHEVRON D



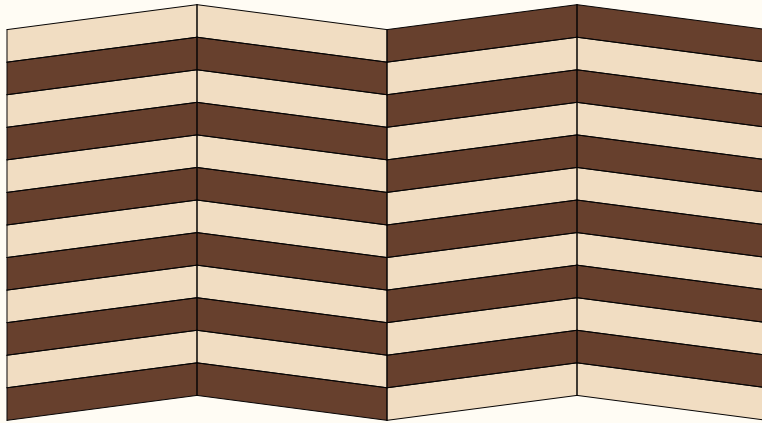
Colors
25% Storm 9,6x56,5 chevron
37,5% Bone 9,6x56,5 chevron
37,5% Dark Grey 9,6x56,5 chevron



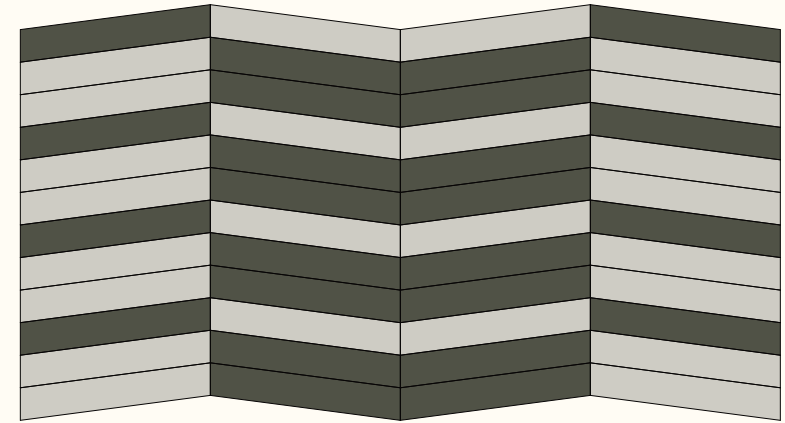
Colors
25% Storm 9,6x56,5 chevron
37,5% Terra 9,6x56,5 chevron
37,5% Dark Grey 9,6x56,5 chevron

CHEVRON A

CHEVRON B



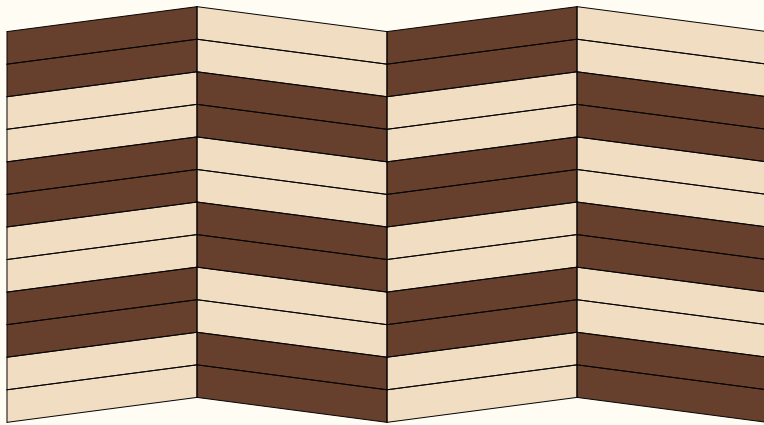
Colors
50% Terra 9.6x56,5 chevron
50% Bone 9.6x56,5 chevron



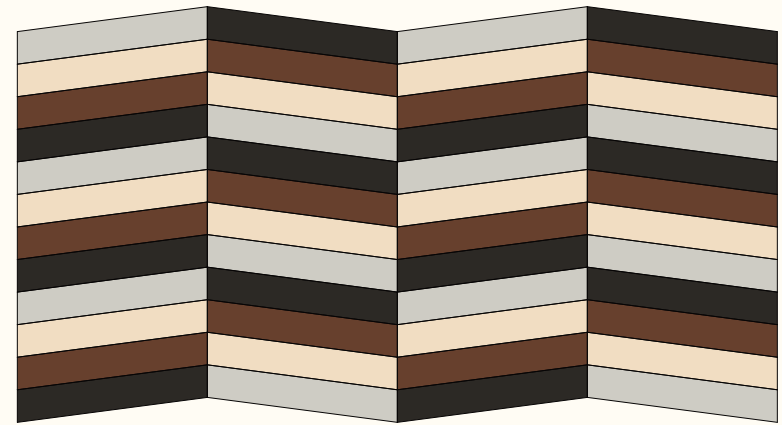
Colors
50% Storm 9.6x56,5 chevron
50% Grey Green 9,6x56,5 chevron

CHEVRON C

CHEVRON D



Colors
50% Terra 9,6x56,5 chevron
50% Bone 9,6x56,5 chevron

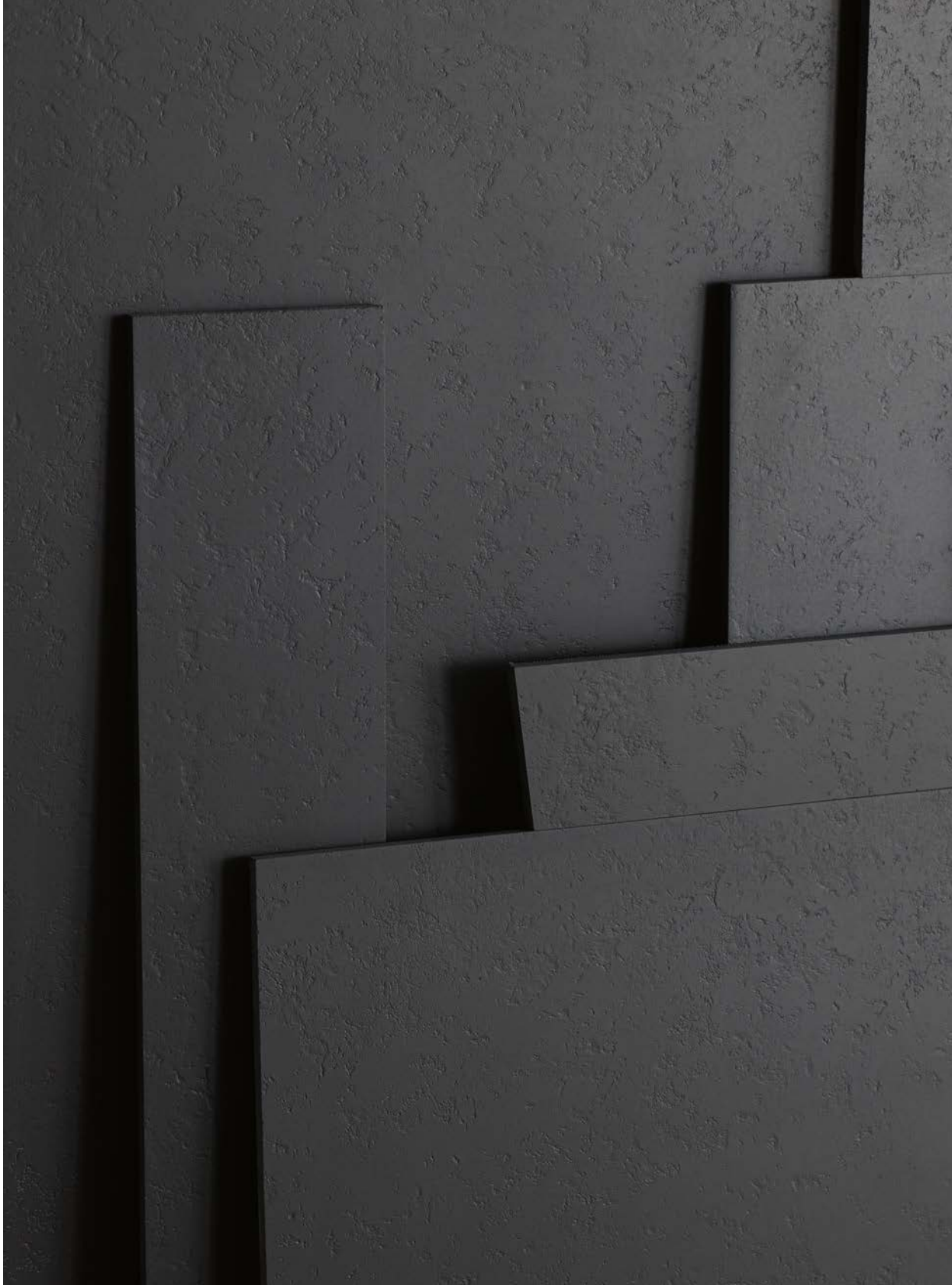


Colors
25% Storm 9,6x56,5 chevron
25% Bone 9,6x56,5 chevron
25% Terra 9,6x56,5 chevron
25% Dark Grey 9,6x56,5 chevron

Kosei

Technical Features

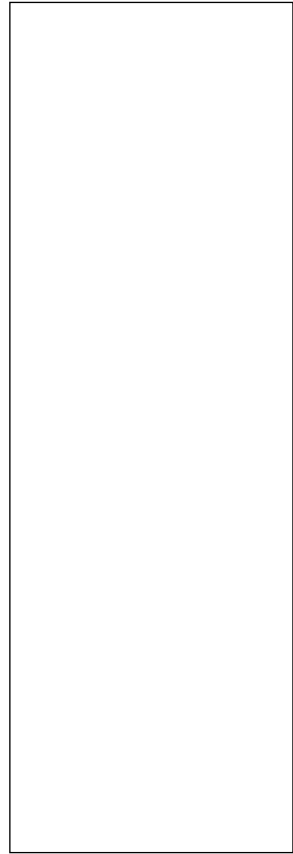




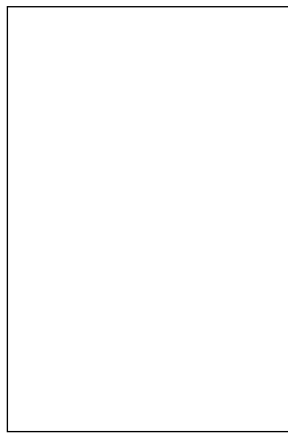
General Information

collection	Kosei
design	Vincent Van Duysen, 2022
production	Industrial
material	Extruded unglazed porcelain stoneware
thickness	10 mm
nominal sizes	60x180 cm (24"x71"), 60x90 cm (24"x36"), 60x60 cm (24"x24"), 15x90 cm (6"x36"), 15x60 cm (6"x24"), 15x30 cm (6"x12"), 15x15 cm (6"x6") chevron: 9,6x56,5 cm (4"x22")
specification	– 5 colours: Bone, Storm, Terra, Grey Green, Dark Grey
category	UNI EN 14411 App A (AI group) UGL

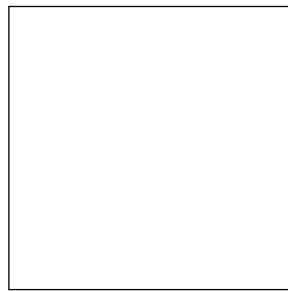
Sizes



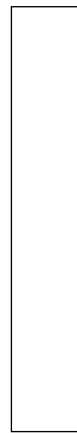
60x180 cm



60x90 cm



60x60 cm



15x90 cm



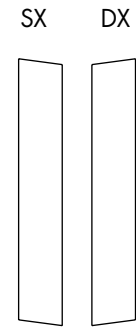
15x60 cm



15x30 cm



15x15 cm



Chevron 9,6x56,5 cm

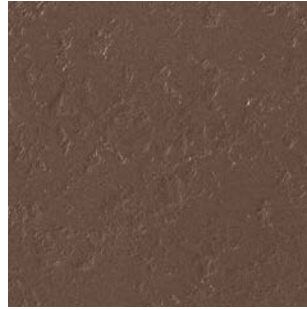
Colors



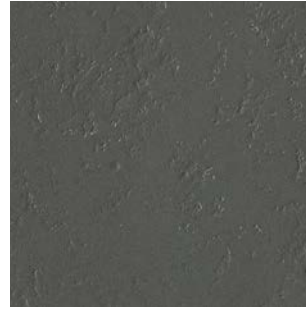
Bone



Storm



Terra



Grey Green



Dark Grey

Laying and maintenance tips

use	Floors, walls – indoor, outdoors.
installation	The double spreading technique is recommended for the 60x180 size.
recommended adhesive	Adhesive for porcelain stoneware.
recommended joints	2mm joints.
recommended fillers	CEMENT-BASED GROUT / EPOXY GROUT. Remove all traces of grout carefully before it dries completely.
cleaning at the end of installation	CEMENT-BASED GROUT: Buffered acid (e.g. DETERDEK PRO by FILA or similar). Wet the floor with water, dilute the product 1:5 with water and pour it on the floor. Wait for 2-3 minutes then use a white scotch brite pad and rinse well with clean water. EPOXY GROUT: Alkaline detergent (e.g. FILA CR10 by FILA). FILA CR10: apply pure, wait for 30 minutes then use a green scotch brite pad. SILICONE: Solvent for silicone e.g. FILA ZERO SIL. Put it straight onto the stain, wait for 20 minutes and remove the mark using scotch brite. PAINT: Can usually be removed using water, but if resin-based paints or particular enamels have been used, it is best to ask the manufacturer which solvent is most suitable. RUST: stain remover es. FILA NO RUST. Apply the product onto the stain, leave for 15 minutes, remove the residue and rinse thoroughly.
general cleaning (installed tiles)	You are recommended to use ordinary neutral detergent diluted in water. Avoid using acid or alkaline products, waxes and/or impregnants. During ordinary cleaning it is recommended to use extremely abrasive items (such as scourers and iron or steel sponges) as little as possible. This recommendation must be adhered to rigorously in the case of tiles with a glossy surface finishing as they are more susceptible to the risk of scuffs, scratches and loss of shine, etc. In the event of heavy dirt or particularly textured surfaces, use an alkaline detergent and rinse after washing. For large surfaces, the use of a floor washing machine is recommended. During every-day cleaning procedures, it is necessary to remember that certain types of dirt (dust, sand) increase the abrasive effect of foot-traffic. Therefore we recommend that you avoid bringing in this type of dirt, which comes in from the outside, by placing a door-mat at the entrance.
calibers (real size)	59.8 x 179.8 cm 59.8 x 89.8 cm 59.8 x 59.8 cm 14.8 x 89.8 cm 14.8 x 59.8 cm 14.8 x 29.8 cm 14.8 x 14.8 cm

Technical features

STANDARD	FEATURES	VALUE REQUIRED	KOSEI
ISO 10545/2	SIZES length and width thickness straightness of edges wedging flatness	± 1% ± 10% ± 0,5% ± 1% ± 0,5%/0,8%	in conformity with standard
ISO 10545/3	water absorption	< 0,5%	0,06%
ISO 10545/4	breaking strength modulus of rupture	≥ 1300 N ≥ 32 N/mm ²	in conformity with standard
ISO 10545/9	resistance to thermal shock	comply requirements	resistant
ISO 10545/12	frost resistance	comply requirements	resistant
ISO 10545/13	Resistance to acids and alkalis (low and high concentration)	declared value	A
	Resistance to household cleaning agents and swimming pool chemicals	minimum class B	A
ISO 10545/14	stains resistance	minimum 3	5
DIN 51130			R10
DIN 51097			B
DCOF		> 0.42	0.84
Pendulum BS (EN 16165-c)			55 dry 45 wet
Pendulum AS/NZS (4586313 app A)			44 P3
Pendulum ES (UNE 41901)			45 C2
ISO 14001			
VOC Emission Declaration of Contents EPD SVHC declaration			available upon request

Packing

SIZE	PCS-SQM	PCS-BOX	SQM-BOX	BOX-PAL	KG-BOX	KG-PAL	SQM-PAL
60-180 cm	0,93	1	1,08	48	25,20	1210	51,84
60-90 cm	1,85	2	1,08	48	25,20	1210	51,84
60-60 cm	2,78	2	0,72	64	16,80	1075	46,10
15-90 cm	7,41	6	0,81	51	18,90	964	41,31
15-60 cm	11,11	9	0,81	52	18,90	983	42,12
15-30 cm	22,22	18	0,81	52	18,90	983	42,12
15-15 cm	44,44	36	0,81	52	18,90	983	42,12
chevron 9,6-56,5	18,44	14	0,76	45	17,70	797	34,20

Vincent Van Duysen

Architetto e designer di origine belga, Vincent Van Duysen è entrato a far parte del team Mutina nel 2022. Ha realizzato le collezioni Kosei, Renga e Yama. Vincent Van Duysen nasce nel 1962 a Lokeren, in Belgio, e si laurea in architettura presso l'Istituto Sint-Lucas di Gent. Nel 1989 fonda lo studio Vincent Van Duysen Architects, che si occupa di product design per numerose aziende internazionali, progetti commerciali e architettonici.

Durante la sua carriera, Van Duysen ha ricevuto numerosi premi, tra cui: Flemish Culture Prize for Design, Belgian Designer of the Year, Henry van de Velde Lifetime Achievement Award e un EDIDA come miglior designer di interni dell'anno. Per molti anni il suo lavoro è apparso su numerose pubblicazioni internazionali e, a partire dal 1994, i suoi progetti e le sue realizzazioni sono state oggetto di diverse monografie.

Belgian architect and designer, Vincent Van Duysen joined the Mutina team in 2022. He designed the Kosei, Renga and Yama collections. Vincent Van Duysen was born in Lokeren, Belgium, in 1962. He earned a degree from the Sint-Lucas School of Architecture, Ghent, and he established Vincent Van Duysen Architects in 1989. The studio focuses on product design for numerous international brands, to commercial and large-scale architectural projects.

During his career, Van Duysen has received multiple awards among which the Flemish Culture Prize for Design, Belgian Designer of the Year and the Henry van de Velde Lifetime Achievement Award, and an EDIDA for Best Interior Designer of the Year. For many years, Van Duysen's work has been appearing on a number of prestigious international publications and, since 1994, his projects and realisations have also been featured in different monographs.



For this collection, I wanted to delve into the history of patterns related to the world of architecture.



Some projects are based on memories. But this one...



I thought of it as something that can last forever.

CREDITS

Art direction: Alla Carta Studio
Graphic design: Matteo Pastorio
Text: Mutina
Photography: Gerhardt Kellermann
Set design: Sonia Pravato
Video frames by Ramon Haindl
Printed and bound in Italy. September 2022.

Special thanks to
Carl Hansen & Søn
Lumina
Molteni&C
Paola Lenti

All the rights are reserved.
Not any part of this work can be reproduced
in any way without the preventive written
authorization by Mutina. All work is
copyrighted © to their respective owners.

To discover more about Mutina
collections visit mutina.it

Ceramiche Mutina Spa
Via del Crociale 25
41042 Fiorano MO, Italia
T +39 0536812800
F +39 0536812808
info@mutina.it
www.mutina.it

© Mutina 2022

